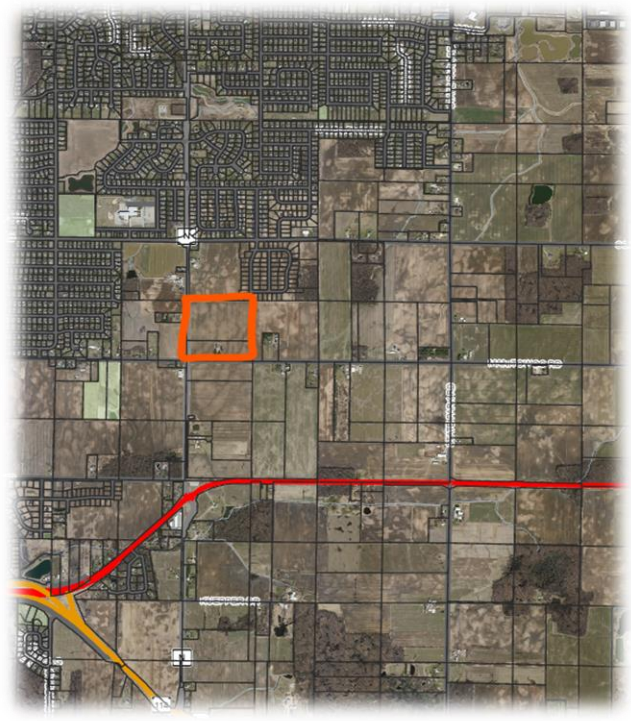
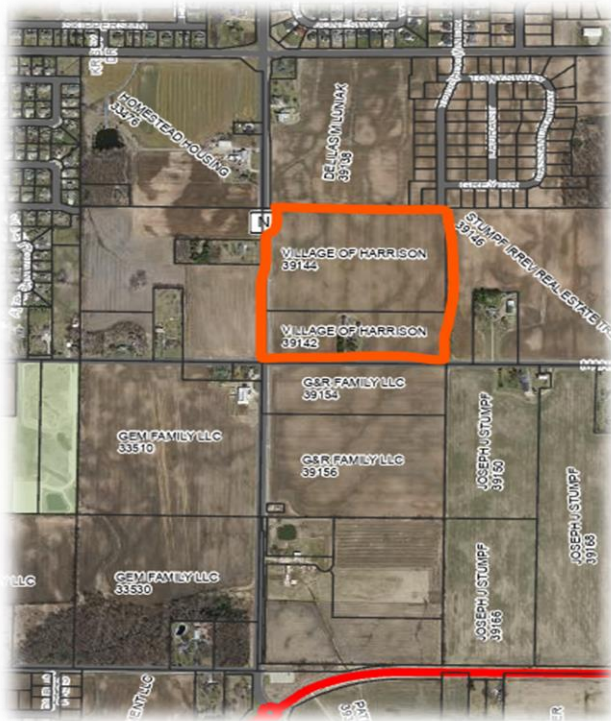


CTH N- VILLAGE OWNED SITE



SITE DETAILS

- 39.67 acres
- Village of Harrison owned
- In TIF 6, Development Incentives Available
- Village Board supports Commercial Zoning and Commercial Development
- Site located on CTH N (8,800 ADT), two miles from CTH KK to the north (15,100 ADT), one mile from USH 10 (6,500 ADT)
- Parcel Numbers: 39144 and 39142

CONTACT INFORMATION

Chad Pelishek
Assistant Village Manager
Village of Harrison
W5298 State Hwy 114
Harrison, WI 54952
cpelishek@harrison-wi.org
(920) 989-1062 ext. 8



