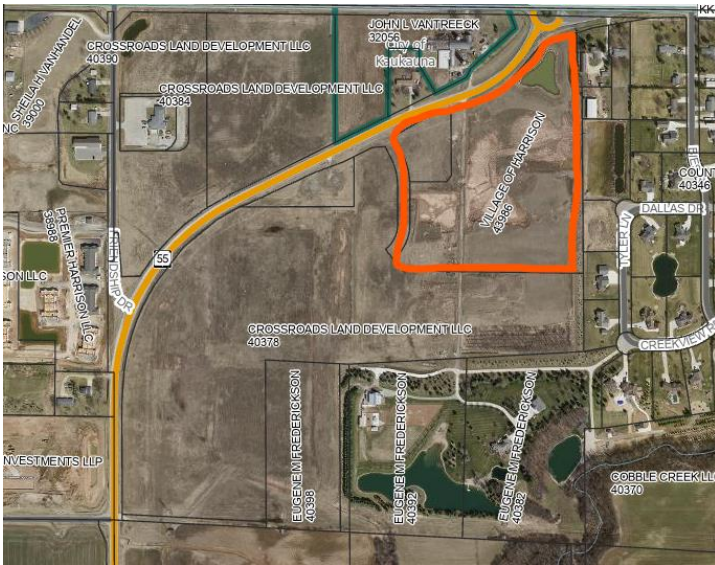
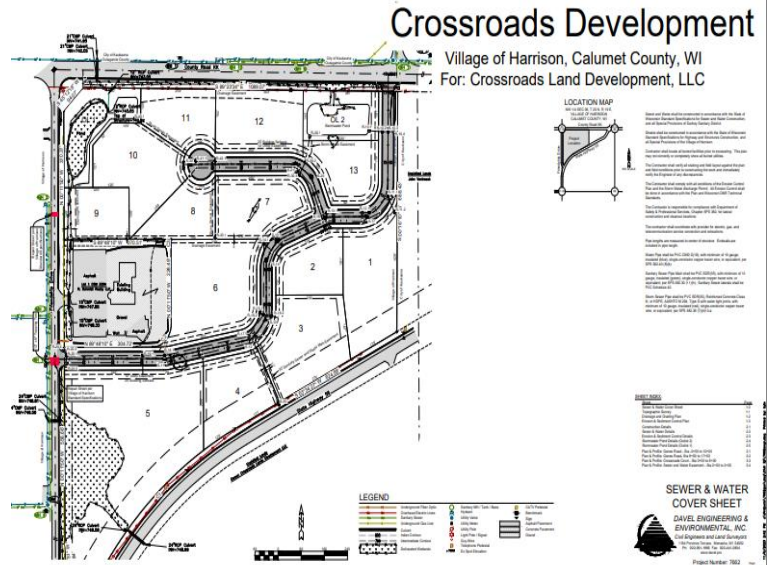


STH 55 VILLAGE OWNED SITE

SITE LOCATION: STH 55 and CTH KK



Adjacent Commercial Subdivision Plat



SITE DETAILS

- 20.00 acres
- Village of Harrison owned
- In TIF 1, Development Incentives Available
- Village Board supports Commercial Zoning and Commercial Development
- Site located on STH 55 (9,000 ADT) and CTH KK (12,000 ADT)
- Parcel Number: 43986

CONTACT INFORMATION

Chad Pelishek
Assistant Village Manager
Village of Harrison
W5298 State Hwy 114
Harrison, WI 54952
cpelishek@harrison-wi.org
(920) 989-1062 ext. 8

