

Housing Affordability Report, 2023

Village of Harrison

January 2024



Prepared by the
Village of Harrison

VILLAGE OF HARRISON

VILLAGE PRESIDENT:

Allison Blackmer

VILLAGE TRUSTEES:

Darlene Bartlein

Julene Baldwin

Mike Brantmeier

Scott Handschke

Matt Lancaster

Mark Van Hefty

ABSTRACT

TITLE: Village of Harrison Housing Affordability Report, 2023

CONTACT: Chad Pelishek, Assistant Village Manager

AUTHORS: Chad Pelishek, Assistant Village Manager
Revised from 2018 Report prepared by the
East Central Wisconsin Regional Planning Commission

SUBJECT: Housing Affordability

DATE: January 2024

PLANNING AGENCY: Village of Harrison

SOURCE OF COPIES: Village of Harrison
W5298 Hwy 114
Menasha, WI 54952
(920) 989-1062
www.harrison-wi.org

In 2018, the Wisconsin State Legislature approved new legislation which requires communities of 10,000 population or more to provide an annual report related to housing to shed light and foster change on affordable housing issues across the state. Specifically, reference Wis. Stats. 66.10013 (Housing affordability report).

TABLE OF CONTENTS

EXECUTIVE SUMMARY	1
HOUSING AFFORDABILITY REPORT REQUIREMENTS	1
HOUSING AFFORDABILITY DATA & RESPONSES	2
Undeveloped Parcels Zoned for Residential Development	3
Undeveloped Parcels with Available Public Facilities/Services	3
Plans & Regulations	4
Financial Impact of Plans & Regulations	8
MODIFICATION OF CONSTRUCTION & DEVELOPMENT REGULATIONS	8
Housing Demand	9
Housing Cost Burden	9
Reductions in Time and Cost	11

APPENDICES

APPENDIX A: PARCEL ANALYSIS MAPS & TABLES	A-1
APPENDIX B: FUTURE LAND USE	B-1



Village of
HARRISON
WHERE OPPORTUNITY LIVES

HOUSING AFFORDABILITY REPORT

This page left blank intentionally.

HOUSING AFFORDABILITY REPORT

EXECUTIVE SUMMARY

In 2018, the Wisconsin State Legislature approved new legislation which requires villages and cities of 10,000 population or more to provide two separate annual reports related to housing affordability and housing fees in an effort to shed light and foster change on affordable housing issues across the state. In 2019, the Village of Harrison, along with 11 other communities in the region, elected to contract with the East Central Wisconsin Regional Planning Commission to prepare these reports. In 2023, the Village of Harrison updated such report. Specifically, this document meets the requirements for Wis. Stats. 66.10013 (Housing affordability report).

HOUSING AFFORDABILITY REPORT REQUIREMENTS

Requirements of this report include the following elements:

- (1)** In this section, “municipality” means a city or village with a population of 10,000 or more.
- (2)** Not later than January 1, of each year, a municipality shall prepare a report of the municipality's implementation of the housing element of the municipality's comprehensive plan under s. 66.1001. The municipality shall update the report annually, not later than January 31. The report shall contain all of the following:
 - a.** The number of subdivision plats, certified survey maps, condominium plats, and building permit applications approved in the prior year.
 - b.** The total number of new residential dwelling units proposed in all subdivision plats, certified survey maps, condominium plats, and building permit applications that were approved by the municipality in the prior year.
 - c.** A list and map of undeveloped parcels in the municipality that are zoned for residential development.
 - d.** A list of all undeveloped parcels in the municipality that are suitable for, but not zoned for, residential development, including vacant sites and sites that have potential for redevelopment, and a description of the zoning requirements and availability of public facilities and services for each property.

- e. An analysis of the municipality's residential development regulations, such as land use controls, site improvement requirements, fees and land dedication requirements, and permit procedures. The analysis shall calculate the financial impact that each regulation has on the cost of each new subdivision. The analysis shall identify ways in which the municipality can modify its construction and development regulations, lot sizes, approval processes, and related fees. to do each of the following:

- (1) Meet existing and forecasted housing demand, and;
- (2) Reduce the time and cost necessary to approve and develop a new residential subdivision in the municipality by 20 percent.

HOUSING AFFORDABILITY DATA AND RESPONSES

Part 2A: The number of subdivision plats, certified survey maps, condominium plats, and building permit applications approved in the prior year (2023) for the Village of Harrison is illustrated in Table 1.

Table 1: Village of Harrison Approved Plats, CSM’s and Building Permits, 2023

Subdivision Plats	Certified Survey Maps	Condominium Plats	Single Family Building Permits	2-Family Building Permits	Multi-family Building Permits	Mobile Home Building Permits
4	8	2	82	0	0	0

Part 2B: The total number of new residential dwelling units proposed in all subdivision plats, certified survey maps, condominium plats, and building permit applications that were approved by the municipality in the prior year (2023) for the Village of Harrison is illustrated in Table 2.

Table 2: Village of Harrison New Residential Dwelling Units Proposed and Approved within Plats and CSM’s, 2023

Residential Dwelling Units (Subdivision Plats)	Proposed		Approved			
	Residential Dwelling Units (Certified Survey Map)	Residential Dwelling Units (Condominium Plats)	Single Family Building Units	2-Family Building Units	Multi-family Building Units	Mobile Home Building Units
79	17	10	82	0	0	0

Parts 2C/2D: A list and map of undeveloped parcels in the municipality that are zoned for residential development. A list of all undeveloped parcels in the municipality that are suitable for, but not zoned for, residential development, including vacant sites and sites that have potential for redevelopment, and a description of the zoning requirements and availability of public facilities and services for each property.

Maps for the Village of Harrison were developed using a variety of GIS data sources and are contained in Appendix A. From a process standpoint, these maps were developed using the following methodologies:

Undeveloped Parcels Zoned for Residential Development

1. Map 1 was created by using the most current tax parcel data at the time the map was created. A subset of “vacant” parcels was created by selecting all parcels which had no “improvement value” on the property.
2. Current zoning districts for the Village were overlaid on this subset of vacant parcels and additional parcels were removed as necessary (i.e. stormwater ponds, larger areas of institutional lands which have no development potential, etc.).
3. The final map illustrates vacant parcels that contain “residential” zoning and those that are “non-residential” (i.e. commercial, industrial, institutional, etc.) in nature.
4. Table 3 provides a listing of parcels along with additional property characteristics.

Undeveloped Parcels with Available Public Facilities/Services

Map 2 and its associated parcel table are contained in Appendix A and were created using the aforementioned data layers, plus the inclusion of municipal water and sewer line location data.

1. Municipal sewer and water line data was obtained, typically with service lines being located in the road rights-of-way.
2. A 100-foot ‘buffer’ was applied to either side of these service lines.
3. Any of the vacant residential/non-residential zoned parcels which fell partly within this 100-foot buffer were selected to produce a map showing which undeveloped parcels have services available.
4. Table 4 provides a listing of parcels along with additional property characteristics.

Part 2E: An analysis of the municipality's residential development regulations, such as land use controls, site improvement requirements, fees and land dedication requirements, and permit procedures. The analysis shall calculate the financial impact that each regulation has on the cost of each new subdivision. The analysis shall identify ways in which the municipality can modify its construction and development regulations, lot sizes, approval processes, and related fees to: 1) Meet existing and forecasted housing demand, and; 2) Reduce the time and cost necessary to approve and develop a new residential subdivision in the municipality by 20 percent.

Plans and Regulations

The Village of Harrison has a number of plans, policies, regulations and fee/permit requirements which guide land use and matters pertaining to residential housing development.

The Village of Harrison’s comprehensive plan, adopted in 2004 and updated in 2017 includes a future land use map, dated February, 2017 (Appendix B). The future land use map illustrates the preferred land use and sets forth the broad policy decisions regarding the location and types of housing that are envisioned in the future. This document is of primary importance in that it sets the tone for addressing affordable housing opportunities and guiding development decisions (Map 2). This plan addresses many aspects of housing, including affordable housing and key aspects of the plan are shown in Table 5 below by the Village.

Table 5: Village of Harrison Comprehensive Plan Summary, 2023

Question / Topic Regarding Comprehensive Plan	Response / Details
What year was your comprehensive plan adopted?	<i>2004, Update 2024</i>
Since its adoption, have amendments been made to the plan to accommodate residential development?	<i>Yes</i>
If you answered Yes to above, please provide details for each amendment (date, location, action summary).	Numerous amendments to the future land use map. 2012 to allow multi-family residential along Hwy 10/114 was approved. 2013 to allow a mix of single-family and two-family along Spring Valley Road was approved. 2017 major update to Comprehensive Plan identified many areas in the Village suitable for multi-family residential. This update also include the development of a Village Center Master Plan that

Question / Topic Regarding Comprehensive Plan	Response / Details
	identified a mix of commercial and residential (apartment and townhome) uses.
What year is next scheduled/planned 10-year update for the Comprehensive Plan?	2025
Were specific concerns about affordable housing brought up by your plan commission, business community or residents during the plan development process for your current comprehensive plan?	Yes
If yes, was affordable housing a community issue at that time, or was it alluded to as a future issue?	Yes
Were there any housing-related organizations or individuals involved in the development of the current comprehensive plan (or its housing element)?	Yes
Is there a dedicated municipal Committee responsible for implementing and monitoring all/portions of the housing element of the current comprehensive plan?	No
Does the housing element of the current comprehensive plan get referenced/reviewed formally during new housing development proposals (re-zonings, platting, etc.)?	Yes
Is there dedicated municipal staff which lead, or assist, in the implementation and monitoring of the current comprehensive plan's housing element?	Yes
Are there existing non-profit organizations involved in the implementation of the current comprehensive plan's housing element?	No
Were existing zoning ordinances, subdivision regulations or other codes/ordinances significantly	No

Question / Topic Regarding Comprehensive Plan	Response / Details
modified after the plan’s adoption to better align with the housing element?	
Please list specific goal/objective/strategy/recommendation/action items within the housing element that have been implemented or addressed to any degree (including planned/pending implementation).	<i>Provide opportunities for retirement facilities, elderly housing, and specialized housing such as nursing homes or community-based residential facilities, and ensure that they are adequately served with transit service, pedestrian facilities, bicycle facilities, recreational facilities, and convenient, nearby shopping, service and entertainment areas. Page 17</i>
	<i>Encourage a mix of housing types throughout the Village that provide a range of options for existing and future residents with varying incomes. Page 17</i>
	<i>Utilize the patterns presented on the Future Land Use Maps as a guide for development approvals. Page 17</i>
	<i>Create appropriate standards for the development of lot sizes for various housing types. Page 17</i>
	<i>To encourage safe, affordable, and quality housing of various types for residents in all stages of life while maintaining the existing housing stock. Page 17</i>
Are you a CDBG-Entitlement Community that has prepared an Impediments to Fair Housing study?	No
Have you completed other housing market or assessment studies?	No
What limiting factors are present which prevent your community from moving forward on further implementation of the current comprehensive plan’s housing element? Please describe.	<i>Cost of raw land makes it difficult for developers to create affordable housing. Developers have their own plan on housing density that they wish to develop.</i>

Additional plans, policies and regulations have been adopted by the Village to address residential housing including:

- Village of Harrison Zoning Ordinance (Chapter 117) outlines basic land use requirements, lot sizes and property setbacks.
- Village of Harrison Land Division Ordinance (Chapter 115) which specifies site improvement requirements and land dedication requirements, if any.
- Mobile Homes and Mobile Home Communities (Chapter 107 & 117) regulate mobile home.
- Plan Review and Building Permit procedures have been adopted by the Village of Harrison and are reviewed periodically.
- Development Standards and Specifications for residential subdivisions are in place and are typically implemented through a Development Agreement. In most cases, the developer is responsible for the entire initial cost of infrastructure including, but not limited to: roads, curb, gutter, stormwater, sewer and water mains. Once the infrastructure meets the standards, the community will take ownership and be responsible for future maintenance (unless otherwise noted in the Developer's Agreement). While the construction of infrastructure is a major consideration in the overall cost of housing, this report has made no attempt to calculate these costs as they can vary greatly depending on size and density of the subdivision, as well as other geographic factors. It should be noted that in general, higher density developments reduce infrastructure costs relative to low density ones. The development community has not fully utilized the ability to create such developments which therefore impacts the cost of housing.
- Fees have been adopted for various activities related to housing development. These fees are outlined in detail in the accompanying *Housing Fee Report*. The Village of Harrison currently has several types of fees schedules published on its website which may apply to new housing development:
 - Building Permit Fee Schedule
 - Multi-family and Commercial Permit Fees
 - Electrical Permit Fee Schedule
 - Erosion Control Permit Fee Schedule
 - Impact Fees
 - HVAC Permit Fee Schedule

- Miscellaneous Permit Fee Schedule
- Plumbing and Sewer Permit Fee Schedule
- Stormwater Management Permit Fee Schedule

- Tax Increment Finance Districts. TIF District #1 is located at the southwestern portion of the Village, at the northeast corner of Highway 10/114 and County LP. TIF District #2 is located in the northeastern portion of the Village, along County KK between State Park Road and Hwy 55, generally. TIF District #3 is located along N Coop Road between Midway Road and Manitowoc Road. TIF District #4 is located in the northwestern portion of the Village, along Lake Park Road adjacent to Midway Road. The purpose of these districts is to increase mixed use development, which includes residential units. TIF District #5 is located in the northeast corner of County Road N and Manitowoc Road and TIF District #6 includes one parcel (Parcel 33286) at the corner of CTH N and KK.

Financial Impact of Plans and Regulations

The financial impacts of local regulations are outlined in the *Village of Harrison Housing Fee Report (2023)*. Regulations enforced by federal and state government also contributed to the increase in costs for development, yet municipalities have no control over these regulations or the associated costs to enforce. Wisconsin has adopted a state-wide uniform building code, which establishes standards for residential dwelling units. In addition, the requirements of NR216 have substantially increased the cost of stormwater management. Under NR216, municipalities are required to reduce stormwater runoff by implementing stormwater management programs. These programs include construction site pollutant control, post-construction stormwater management, etc. Furthermore, restrictive covenants imposed by developers may also add cost to development by setting architectural guidelines, types of exterior building materials, structural design or dictating the size of a dwelling unit.

MODIFICATION OF CONSTRUCTION AND DEVELOPMENT REGULATIONS

This analysis identifies ways in which the municipality can modify its construction and development regulations, lot sizes, approval processes, and related fees in order to do each of the following: (1) Meet existing and forecasted housing demand, and; (2) Reduce the time and cost necessary to approve and develop a new residential subdivision in the municipality by 20 percent.

Housing Demand

Housing demand for the Village of Harrison has been calculated using accepted methodologies developed by the East Central Wisconsin Regional Planning Commission. In this case, two components were evaluated: a) forecasted housing and land use demands by unit type, and; b) existing housing cost burden.

Based on Wisconsin Department of Administration and U.S. Census data, Tables 6 and 7 illustrate the forecast household growth for the Village and the corresponding demands by housing unit type using existing land use density information.

Table 6: Village of Harrison Year 2040 Household Projections

Municipality	2010	2015	2020	2025	2030	2035	2040	Diff. 2010-2040
Village of Harrison	3,644	3,980	4,675	5,344	6,040	6,619	7,075	3,431

WDOA, Wisconsin Demographic Services Center, Vintage 2013 Population Projections

Table 7: Village of Harrison Year 2040 Projected Housing and Land Use Demands

Municipality	Adjusted Remaining Units Needed (2019-2040)			Development Density			Acres Needed		
	SF	2F	MF	SF	2F	MF	SF	2F	MF
Village of Harrison	2,635	41	0	1.65	3.30	1.21	2,635	41	0

Source: ECWRPC, 2019

Housing Cost Burden

Table 8 illustrates the current “Housing Cost Burden” for Village of Harrison households. For any particular household income category, the corresponding number which spent 30% or more of their income on housing costs is shown. In general, those with lower incomes are more burdened. However it is interesting to note that the Village of Harrison’s housing cost burden overall for homeowners is higher than the urbanized area average. (Note Village of Harrison data used was includes information prior to the Village of Harrison incorporation.)

Table 8: Village of Harrison and Regional Housing Burden (2013-2017)

Household Income & percent spent on housing costs	Urbanized Area Regional Total (Fox Cities, Oshkosh & Fond du Lac)		V. Harrison	
	Totals	% of Total (30% or more)	Estimate	% of Total (30% or more)
Total Owner-occupied housing units:	70,105	18%	3,652	12%
Less than \$20,000:	4,419		138	
30 percent or more	3,905	88%	138	100%
\$20,000 to \$34,999:	8,097		178	
30 percent or more	3,746	46%	53	30%
\$35,000 to \$49,999:	8,674		256	
30 percent or more	2,473	29%	81	32%
\$50,000 to \$74,999:	15,091		547	
30 percent or more	1,898	13%	109	20%
\$75,000 or more:	33,444		2,508	
30 percent or more	807	2%	47	2%
Zero or negative income	380	n/a	25	n/a
Total Renter-occupied housing units:	39,869	42%	157	41%
Less than \$20,000:	10,699		10	
Less than 20 percent	176	2%	0	0%
20 to 29 percent	809	8%	0	0%
30 percent or more	9,714	91%	10	100%
\$20,000 to \$34,999:	9,811		49	
Less than 20 percent	640	7%	0	0%
20 to 29 percent	3,706	38%	0	0%
30 percent or more	5,465	56%	49	100%
\$35,000 to \$49,999:	6,751		0	
Less than 20 percent	2,187	32%	0	0%
20 to 29 percent	3,462	51%	0	0%
30 percent or more	1,102	16%	0	0%
\$50,000 to \$74,999:	6,534		65	
Less than 20 percent	4,842	74%	0	0%
20 to 29 percent	1,439	22%	59	91%
30 percent or more	253	4%	6	9%
\$75,000 or more:	4,868		21	
Less than 20 percent	4,600	94%	11	52%
20 to 29 percent	238	5%	10	48%
30 percent or more	30	1%	0	0%

Zero or negative income	447	n/a	0	n/a
No cash rent	759	n/a	12	n/a

Source: 2013-2017 ACS 5-Year Estimates, B25106

Based on this information more affordable homes and rentals are needed within the Village, particularly for those with lower incomes. However, providing affordable housing involves more than reducing costs imposed by municipalities or revising local policies. Policies imposed by others and limited funding also affect housing affordability. The U.S. Department of Housing and Urban Development provides housing choice vouchers for very low-income families to reduce the cost of housing. Yet, this program has not been expanded in years and does not supply a sufficient supply of vouchers to address housing affordability for renters. Other programs correspondingly provide assistance for low-income renters and homeowners but these programs likewise fall short of the needs. Banks and other financial institutions must also accept some of the responsibility since they must approve financing for affordable housing.

Reductions in Time and Cost

In order to reduce the time and cost necessary to approve and develop a new residential subdivision in the municipality by 20 percent, a number of things need to be taken into consideration.

- 1) Where exactly this burden should be placed? Should this burden be placed on the public sector entirely? Or should the private sector (homebuilders, realty professionals, etc.) share some of this burden? Housing style, design, size and materials choice make up a large portion of the cost of housing. When the development community places restrictive covenants on subdivisions, this inherently increases the costs for housing.
- 2) The cost of infrastructure and maintenance was not part of the state’s requirement to analyze and include in this report yet is a critical factor for the costs associated with new housing development. Furthermore, state imposed levy limits further impact the municipalities’ ability to maintain or construct new infrastructure.
- 3) Lastly, as noted in the Housing Fee Report, a number of additional costs are imposed by county, state or local entities (sanitary districts) for things such as plumbing plan reviews, utility assessments and the like. These items are not even considered in the statutory requirements for this report and not in the purview of the municipality to control.

The Village of Harrison could, of course, simply slash the costs of its various permits and fees by 20%, thereby reducing the amount of revenue generated (see Housing Fee Report). This revenue is used by the Village to fund the necessary services and safety inspections that are required by

state law and/or are simply good practice. By cutting fees 20%, it is likely that the plan review, approval and permit issuance processes will take longer due to reduced staffing and capacity.

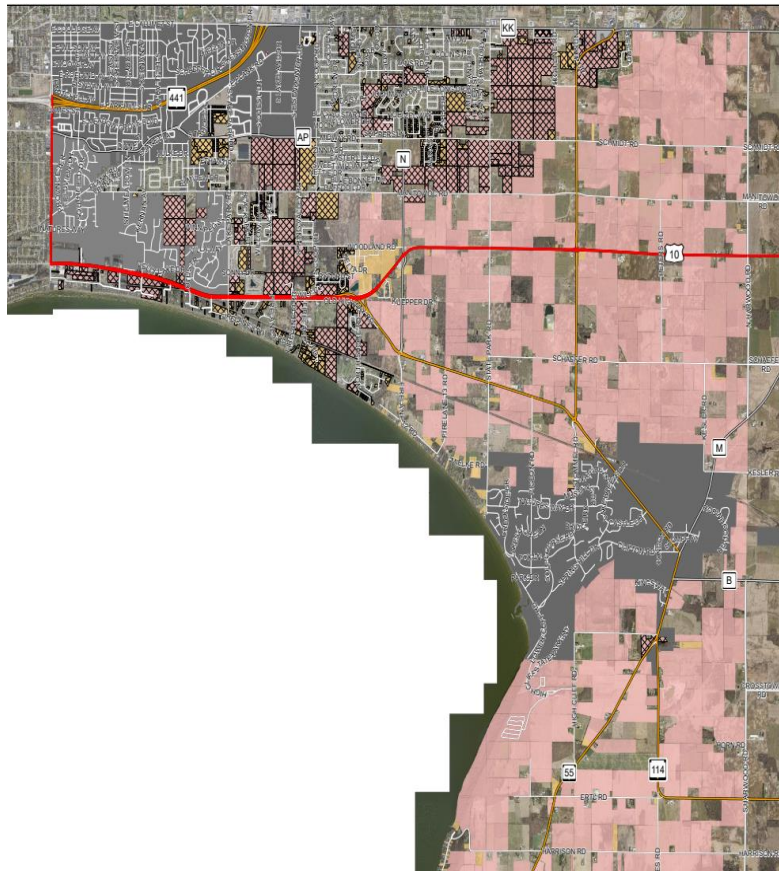
The Village could also reduce minimum lot sizes, but would this actually encourage smaller more affordable houses? Reducing parking requirements and street width could potentially reduce the cost to build and maintain infrastructure, making housing more affordable. The added benefit is that this would not only reduce infrastructure costs but would also reduce stormwater runoff from impervious surfaces. While the Village could make a number of changes, ultimately it is whether or not the development community takes advantage of changes in order to create more affordable homes. Taking this a step further, new models of housing development such as Cottage-Style developments or Accessory Dwelling Units (ADUs), or new public-private financing partnerships could be looked at as a way to further reduce housing costs. Partnerships with non-profit organizations such as Habitat for Humanity have also proven successful.

Reductions in time could reduce costs; however, developers and the state also play a role in the process (cost) to approve a new residential subdivision. For example an incomplete application will necessitate additional time by the developer to submit further information. Plats must be approved following state statute 236, which clearly sets out procedures which must be followed by an entity approving a plat. If the proposed development is outside of a municipality, it must first be annexed into the community. Again the process to annex properties is also laid out in the state statutes (66.0217, 66.0219, 66.0221 and 66.0223), and municipalities must follow these procedures. Municipalities may be able to incorporate additional efficiencies in the subdivision review process which may impact the time necessary to approve a plat.



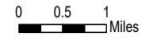
APPENDICES

Vacant Residential/Non-Residential Parcel with Sewer Services



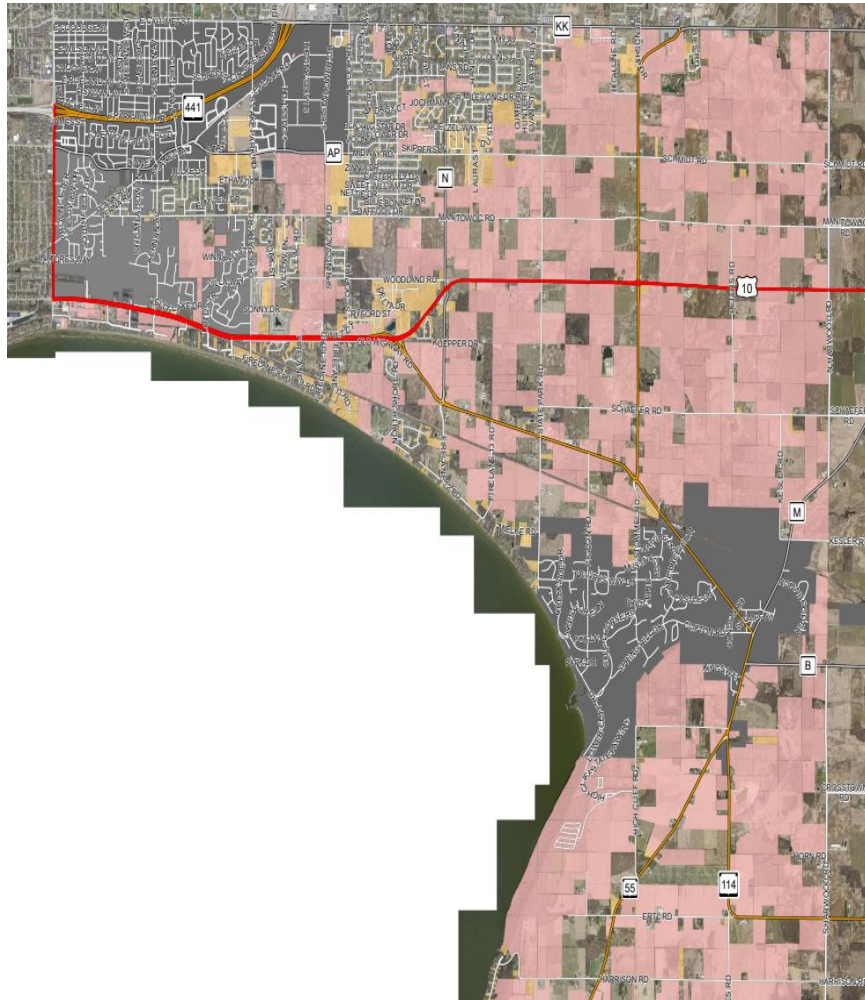
Map 2
Vacant Residential/Non-Residential
Parcels with Sewer Services

-  Access to Sewer Services
-  Zoned Non-Residential
-  Zoned Residential
-  Federal Highways
-  State Highways
-  County Highways
-  Local Roads
-  Municipal Streets



Disclaimer:
This map was created using data obtained from Calumet County.

Vacant Parcels with Residential and Non-Residential Zoning



Map 1
Vacant Parcels with Residential
& Non-Residential Zoning

-  Zoned Non-Residential
-  Zoned Residential
-  Federal Highways
-  State Highways
-  County Highways
-  Local Roads
-  Municipal Streets



Disclaimer:
This map was created using data obtained from Calumet County.

Vacant Residential Parcels

GISAC	LOCID	MUNI	OWNER1NAME	OWNER2NAME	MAILADD1	MAILADD2	MAILCITY	MAILZIP	PHYSADD
0.28	35062	VILLAGE OF HARRISON	KENNETH B BUCHINGER		W3007 EMONS RD		APPLETON	54915	W5906 BLAZING STAR DR
0.524	35144	VILLAGE OF HARRISON	WANDA K SPENCER	GARRY D SPENCER	N9311 ROSEBUD LN		APPLETON	54915	N9317 ROSEBUD LN
0.425	35168	VILLAGE OF HARRISON	JACOB SCHOLTKA	HOLLY SCHOLTKA	W5927 STRAWFLOWER DR		APPLETON	54136	W5927 STRAWFLOWER DR
0.35	35238	VILLAGE OF HARRISON	YANG BLONG	CHU LEE YANG	W5558 COLIN ST		APPLETON	54915	W5558 COLIN ST
0.32	35296	VILLAGE OF HARRISON	MICHAEL L WILCOX		W5765 HOELZEL WAY		APPLETON	54915	W5765 HOELZEL WAY
0.32	35300	VILLAGE OF HARRISON	GARY A FISCHER		W5781 HOELZEL WAY		APPLETON	54915	W5781 HOELZEL WAY
0.51	35326	VILLAGE OF HARRISON	DAVID M FULLER	LORI L FULLER	N9376 CHEYENNE DR		APPLETON	54915	N9376 CHEYENNE DR
0.35	35452	VILLAGE OF HARRISON	SHAWN A KING	CHRISTINA M KING	N9363 SNAPDRAGON LN		APPLETON	54915	N9363 SNAPDRAGON LN
0.4	41684	VILLAGE OF HARRISON	STEVEN R ENDRIES		N8550 FIRELANE 10		MENASHA	54952	N LAKE SHORE DR
0.31	35602	VILLAGE OF HARRISON	KEVIN K KLOEHN	JENNIFER S KLOEHN	W6056 CAMRON DR		APPLETON	54915	W6056 CAMRON DR
0.39	35612	VILLAGE OF HARRISON	DAVID J VANDENBOOGART	JANEL K VANDENBOOGART	W6023 GREYSTONE CT		APPLETON	54915	W6023 GREYSTONE CT
3.07	35656	VILLAGE OF HARRISON	CLIFFORD P UITENBROEK		N9663 TOM CT		APPLETON	54915	N9412 ANDREW DR
0.3	35684	VILLAGE OF HARRISON	AARON MADISON	JENNIFER HETHERINGTON	W6053 PAIGE WAY		APPLETON	54915	W6053 PAIGE WAY
0.43	35814	VILLAGE OF HARRISON	DANIEL J ANDRASCHKO	STEPHANIE L STEFONIK	W5494 AMY AVE		APPLETON	54915	W5494 AMY AVE
0.37	35930	VILLAGE OF HARRISON	DEBRA KILGAS	JOSEPH KILGAS	W5326 AMY AVE		APPLETON	54915	W5326 AMY AVE
0.37	35912	VILLAGE OF HARRISON	JT SPRANGERS TREE FARM TRUST		W5388 AMY AVE		APPLETON	54915	W5396 AMY AVE
0.47	35914	VILLAGE OF HARRISON	MATT E BAUGHMAN	STACEY L BAUGHMAN	N1187 RIVER DR		GREENVILLE	54942	STATE PARK RD
0.92	46410	VILLAGE OF HARRISON	JASON WACHTENDONK	JANEL WACHTENDONK	W5646 HOELZEL WAY		APPLETON	54915	W5663 VANS RD
0.37	33228	VILLAGE OF HARRISON	JUSTIN T WENDEL		719 W. 4TH STREET		KIMBERLY	54136	HANDEL DR
1.145	40624	VILLAGE OF HARRISON	BRODE H ALBRECHT	TEAGAN E ALBRECHT	N8516 PETERS RD		MENASHA	54952	PETERS RD
0	41738	VILLAGE OF HARRISON	STUSEK CHARLES P	STUSEK MARY C	W6657 FIRELANE 6		MENASHA	54952	FIRELANE 6
0.69	36124	VILLAGE OF HARRISON	VILLAGE OF HARRISON		W5298 HWY 114		MENASHA	54952	STORM WATER RETENTION
0.41	36170	VILLAGE OF HARRISON	GREGORY A PARRETT	LISA G PARRETT	W5891 SWEET PEA DR		APPLETON	54915	W5891 SWEET PEA DR
0.33	36432	VILLAGE OF HARRISON	RYAN R WILLIAMS		W5446 COLIN ST		APPLETON	54915	W5446 COLIN ST
0.38	36440	VILLAGE OF HARRISON	LORA SOUTHWORTH		W5418 COLIN ST		APPLETON	54915	W5418 COLIN ST
0.33	36344	VILLAGE OF HARRISON	JEFFERY L SCHUHART	KIM A SCHUHART	N9581 HARTFORD LN		APPLETON	54915	N9581 HARTFORD LN
0.38	36610	VILLAGE OF HARRISON	BENJAMIN J OSKEY	KRYSTAL A OSKEY	W5528 MILE LONG DRIVE		APPLETON	54915	W5528 MILE LONG DR
0.35	36628	VILLAGE OF HARRISON	AMY K BEAMAN	CHARLES F BEAMAN	N9436 DUSTY DR		APPLETON	54915	N9436 DUSTY DR
0.32	36756	VILLAGE OF HARRISON	JEE VEE LEE	LILY XIONG	W5561 MILE LONG DRIVE		APPLETON	54915	W5561 MILE LONG DR
0.59	36506	VILLAGE OF HARRISON	KEVIN M SMITH		N9421 OLDE OAK TREE CT		APPLETON	54915	N9421 OLDE OAK TREE CT
0.47	36532	VILLAGE OF HARRISON	VILLAGE OF HARRISON		W5298 HWY 114		MENASHA	54952	W5906 SWEET PEA DR
0.38	35906	VILLAGE OF HARRISON	HOLLY ST CONDO-REFERENCE ONLY		HOLLY ST		APPLETON	54915	FIRELANE 4
3.11	42632	VILLAGE OF HARRISON	VICTOR VIL CONDO- I REFERENCE		QUEEN ANN LN		APPLETON	54915	QUEEN ANN LN
3.2	42634	VILLAGE OF HARRISON	VICTOR VIL CONDO-II REFERENCE		VICTORIAN DR		APPLETON	54915	VICTORIAN DR
3.6	42636	VILLAGE OF HARRISON	VICTOR VIL CONDO-II ADDN-REFER		VICTORIAN DR		APPLETON	54915	VICTORIAN DR
0.69	37226	VILLAGE OF HARRISON	TINA A FOX		W5453 HIDDEN TRAIL LN		APPLETON	54915	W5453 HIDDEN TRAIL LN
1.406	37236	VILLAGE OF HARRISON	VILLAGE OF HARRISON		W5298 HWY 114		MENASHA	54952	HIDDEN TRAIL LN
0.29	37088	VILLAGE OF HARRISON	BRETT JANSSEN	REBECCA HAUG	N8938 LILAC RD		MENASHA	54952	N8938 LILAC RD
0.29	37090	VILLAGE OF HARRISON	MORGAN OCONNELL	BRIAN OCONNELL	W5973 WOODLAND RD		MENASHA	54952	N8939 LILAC RD
0.88	36772	VILLAGE OF HARRISON	VILLAGE OF HARRISON		W5298 HWY 114		MENASHA	54952	DETENTION POND
0.33	36782	VILLAGE OF HARRISON	JOSEPH JONES	MONICA JONES	W5850 SWEET WILLIAM DR		APPLETON	54915	W5850 SWEET WILLIAM DR
0.3	36820	VILLAGE OF HARRISON	ANA I GONZALEZ	MIGUEL A BECERRA	W5882 GERANIUM DR		APPLETON	54915	W5882 GERANIUM DR
0.3	36844	VILLAGE OF HARRISON	KEVIN R ROLAIN	JESSICA A ROLAIN	N9152 AFRICAN VIOLET DR		APPLETON	54915	N9152 AFRICAN VIOLET DR
0.38	36862	VILLAGE OF HARRISON	CHRISTI E SLOWEY	DANIEL B SLOWEY	N9130 PETUNIA CT		APPLETON	54915	N9130 PETUNIA CT
6.472	42072	VILLAGE OF HARRISON	SUZETTE A VOSTERS	TIMOTHY J VOSTER	N8375 FIRELANE 12		MENASHA	54952	N8375 FIRELANE 12
0.727	36042	VILLAGE OF HARRISON	VILLAGE OF HARRISON		W5298 HWY 114		MENASHA	54952	CORNFLOWER DR
0.58	36918	VILLAGE OF HARRISON	VILLAGE OF HARRISON		W5298 HWY 114		MENASHA	54952	STORM WATER DETENTION
0.506	39498	VILLAGE OF HARRISON	DAVID L BEHNKE	TAMMY R MARTIN	N8754 ZIRBEL DR		MENASHA	54952-9721	N8754 ZIRBEL DR
0	41720	VILLAGE OF HARRISON	PLAT OF WILLOWS-LOT E				MENASHA	54952	SCHAUMANN AVE
0.11	37462	VILLAGE OF HARRISON	HARRISON UTILITIES		N8722 COUNTY LP		MENASHA	54952	WILD CHERRY CT
0.06	37466	VILLAGE OF HARRISON	KIMBERLY AREA SCHOOL DISTRICT		217 E KIMBERLY AVE	PO BOX 159	COMBINED LOCKS	54113	SHAGBARK HICKORY LN

0.31	37470	VILLAGE OF HARRISON	JAMES A & LINDA S WEIDERT FAMILY TRUST		W6128 HEMLOCK LN		MENASHA	54952	W6128 HEMLOCK LN
0.373	37512	VILLAGE OF HARRISON	MICHELLE R ROBB	BRIAN J ROBB	W6119 HEMLOCK LN		MENASHA	54952	W6119 HEMLOCK LN
0.59	37596	VILLAGE OF HARRISON	VILLAGE OF HARRISON		W5298 HWY 114		MENASHA	54952	W6165 WOODLAND RD
0.71	42132	VILLAGE OF HARRISON	ERIC R DEERING	KIRSTEN L DEERING	W5794 TURNBERRY DR		MENASHA	54952	W5794 TURNBERRY DR
2.096	42142	VILLAGE OF HARRISON	WILLIAM P BRADLEY	JULIE M BRADLEY	W5768 TURNBERRY DR		MENASHA	54952	W5768 TURNBERRY DR
0.5	42148	VILLAGE OF HARRISON	LEDEAN M SCHREMP	THOMAS G SCHREMP	W5789 TURNBERRY DR		MENASHA	54952	W5789 TURNBERRY DR
0.49	42150	VILLAGE OF HARRISON	JASON W DERCKS	SUSAN DERCKS	653 MIRANDA ST		COMBINED LOCKS	54113	N8389 FIRESTONE WAY
0.45	42172	VILLAGE OF HARRISON	ROBERT D GREGORSKI		N8418 NORTH SHORE RD		MENASHA	54952	N8417 MUIRFIELD WAY
0.45	42174	VILLAGE OF HARRISON	ROBERT D GREGORSKI		N8418 NORTH SHORE RD		MENASHA	54952	N8425 MUIRFIELD WAY
0.45	42176	VILLAGE OF HARRISON	ROBERT D GREGORSKI		N8418 NORTH SHORE RD		MENASHA	54952	N8433 MUIRFIELD WAY
0.28	42194	VILLAGE OF HARRISON	DANIEL RANKIN	KARI RANKIN	W8647 WINDING TRAIL DRIVE		MENASHA	54952	N8647 WINDING TRAIL DR
0.615	37598	VILLAGE OF HARRISON	VANHANDEL FAMILY LMTD PARTNER		C/O ROGER VANHANDEL	N436 DEBRUIN RD	KAUKAUNA	54130	EVAN ST
0.29	37352	VILLAGE OF HARRISON	JEFFREY G WILCOX	KIMBERLY L WILCOX	W5354 MILE LONG DR		APPLETON	54915	W5354 MILE LONG DR
0.34	37370	VILLAGE OF HARRISON	JAMES M DURBIN	MARGY L DURBIN	W5428 MILE LONG DR		APPLETON	54915	W5428 MILE LONG DR
0.34	37428	VILLAGE OF HARRISON	KEVIN T COONS	LINDSY C MORGAN	N9468 CUMBERLAND DRIVE		APPLETON	54915	N9468 CUMBERLAND DR
0.41	37450	VILLAGE OF HARRISON	MARK J JR ZOERNER	NICOLE R BRAATEN	N9478 HUNTER ST		APPLETON	54915	N9478 HUNTER ST
2.45	40752	VILLAGE OF HARRISON	BILLIBOB J BOOR		PO BOX 714		NEENAH	54957	HWY 55 & 114
4	40258	VILLAGE OF HARRISON	SANDERFOOT THOMAS & SHAWN RVT		N8045 STATE PARK RD		MENASHA	54952	MIELKE RD
4.906	40260	VILLAGE OF HARRISON	SANDERFOOT THOMAS & SHAWN RVT		N8045 STATE PARK RD		MENASHA	54952	MIELKE RD
0.55	42230	VILLAGE OF HARRISON	CHAD LUETKENS	CHRISTINE LUETKENS	N8586 WINDING TRAIL DR		MENASHA	54952	N8586 WINDING TRAIL DR
0.35	42244	VILLAGE OF HARRISON	JOSEPH K GOLSON	RHONDA J GOLSON	N8642 WINDING TRAIL DR		MENASHA	54952	N8642 WINDING TRAIL DR
1.239	41704	VILLAGE OF HARRISON	ROBERT M BERKHOLTZ		135 OAK GROVE LN		YELLVILLE	72687	FIRELANE 6
0.764	33238	VILLAGE OF HARRISON	VILLAGE OF HARRISON		W5298 HWY 114		MENASHA	54952	HANDEL DR
0.6	37734	VILLAGE OF HARRISON	NOE RD CONDO N9683-N9691 REFER		NOE RD N9683-N9691		APPLETON	54915	NOE RD
0.353	37752	VILLAGE OF HARRISON	SHARON L OBERMANN	JOHN L OBERMANN	W6076 SWEET WILLIAM DR		APPLETON	54915	W6076 SWEET WILLIAM DR
2.226	37740	VILLAGE OF HARRISON	VILLAGE OF HARRISON		W5298 HWY 114		MENASHA	54952	DETENTION POND
0.362	43162	VILLAGE OF HARRISON	MASON GARRETT	LAURA BUSS	W6522 ETHAN DR		APPLETON	54915	W6522 ETHAN DR
0.507	43174	VILLAGE OF HARRISON	LUKE PAN	SARAH L PAN	N9182 DYLAN DR		APPLETON	54915	N9182 DYLAN DR
0.302	43214	VILLAGE OF HARRISON	MATTHEW STOEGBAUER		N9152 BRENDA DR		APPLETON	54915	N9152 BRENDA DR
0.339	43216	VILLAGE OF HARRISON	BRIAN D LEITZINGER	JULIETTE A LEITZINGER	N9146 BRENDA DR		APPLETON	54915	N9146 BRENDA DR
0.434	43232	VILLAGE OF HARRISON	CAYETANA RODRIGUEZ	ANGEL BECERRA	N7333 S HARWOOD RD		HILBERT	54129	W6545 BRITTANY DR
0.307	43236	VILLAGE OF HARRISON	LINDA I VADNAIS	TRUST	W6559 BRITTANY DRIVE		APPLETON	54915	W6559 BRITTANY DR
0.452	44462	VILLAGE OF HARRISON	LAWRENCE J BIRLING	JULIE K BIRLING	W6576 MANITOWOC RD		MENASHA	54952	BRITTANY DR
2.03	43272	VILLAGE OF HARRISON	VILLAGE OF HARRISON		W5298 HWY 114		MENASHA	54952	DETENTION POND
0.741	43274	VILLAGE OF HARRISON	VILLAGE OF HARRISON		W5298 HWY 114		MENASHA	54952	DETENTION POND
0.309	37638	VILLAGE OF HARRISON	RACHEL K VANMUN	ALAN A VANMUN	W5963 SWEET WILLIAM DR		APPLETON	54915	W5963 SWEET WILLIAM DR
0.527	37708	VILLAGE OF HARRISON	SARA WEBER	ERIC HETZEL	W5984 SWEET PEA DRIVE		APPLETON	54915	W5984 SWEET PEA DR
1.16	37634	VILLAGE OF HARRISON	VILLAGE OF HARRISON		W5298 HWY 114		MENASHA	54952	SWEET PEA DR
0.688	37376	VILLAGE OF HARRISON	VILLAGE OF HARRISON		W5298 HWY 114		MENASHA	54952	MILE LONG DR
2	33122	VILLAGE OF HARRISON	JAMES M WIDDER		1224 E GLENDALE AVE		APPLETON	54911	STATE PARK RD
1.16	39050	VILLAGE OF HARRISON	MARK J DERRICKS	MARLENE A DERRICKS	N9428 STATE PARK RD		APPLETON	54915	N9428 STATE PARK RD
5	39068	VILLAGE OF HARRISON	PHILIP W HIETPAS	BRODY P HIETPAS	W5006 SCHMIDT ROAD		KAUKAUNA	54130	W5006 SCHMIDT RD
1.35	33186	VILLAGE OF HARRISON	ASHLEY M YOUREN	JORDAN J YOUREN	N9593 STATE PARK RD		APPLETON	54915	N9593 STATE PARK RD
4.425	33232	VILLAGE OF HARRISON	VILLAGE OF HARRISON		W5298 HWY 114		MENASHA	54952	HANDEL DR
8.8	33252	VILLAGE OF HARRISON	VANHANDEL FAMILY LMTD PARTNER		C/O ROGER VANHANDEL	N436 DEBRUIN RD	KAUKAUNA	54130	N9580 COUNTY N
26.09	33260	VILLAGE OF HARRISON	VANHANDEL FAMILY LMTD PARTNER		C/O ROGER VANHANDEL	N436 DEBRUIN RD	KAUKAUNA	54130	N9580 COUNTY N
0.47	33304	VILLAGE OF HARRISON	XI LIN		N9606 NOE RD		APPLETON	54915	N9606 NOE RD
0.03	33316	VILLAGE OF HARRISON	JOHN M ROTHER	CRYSTAL C ROTHER	N9678 SHEPHERD LN		APPLETON	54915	SHEPHERD LN
0.5	33320	VILLAGE OF HARRISON	JANINE L JANDREY	TIM M JANDREY	N9569 DARBOY DR		APPLETON	54915	NOE RD
8.18	33366	VILLAGE OF HARRISON	UITENBROEK IRENE R LIV TRUST		W6003 COUNTY KK		APPLETON	54915	MONARCH DR
0.29	46030	VILLAGE OF HARRISON	DUSTIN HOFFMAN	MINDI HOFFMAN	W5704 HOELZEL WAY		APPLETON	54915	W5704 HOELZEL WAY
0.25	45272	VILLAGE OF HARRISON	VILLAGE OF HARRISON		W5298 HWY 114		MENASHA	54952	MANITOWOC RD

1.49	44034	VILLAGE OF HARRISON	JONEN FAMILY LTD PARTNRSP THE	C/O ANN JONEN	PO BOX 64	KEWAUNEE	54216	W6931 MANITOWOC RD
0.3	44050	VILLAGE OF HARRISON	MARY G GIRARDI		16 BRIGHTON CIR	APPLETON	54915	W6803 MANITOWOC RD
39.81	33502	VILLAGE OF HARRISON	SUBEDIBROTHERS REALESTATE LLC		3045 WINNEPEG ST	MENASHA	54952	MANITOWOC RD
3	33532	VILLAGE OF HARRISON	GEM FAMILY LLC		19 CORN SILK CT	WRIGHTSTOWN	54180	COUNTY N
0.4	46252	VILLAGE OF HARRISON	DERCKS DEWITT II LLC		3405 COMMERCE CT STE C	APPLETON	54911	W5595 GREY DR
0.75	39264	VILLAGE OF HARRISON	NATHAN GERRITS		W4986 US 10	MENASHA	54952	HWY 10
1	39372	VILLAGE OF HARRISON	JOHNNY MORALES	ALONDRA BARRON LOPEZ	W5571 HWY 10	MENASH	54952	HWY 10
5.42	39376	VILLAGE OF HARRISON	DENISE A LESSOR		N8814 COUNTY N	MENASHA	54952	N8814 COUNTY N
25.82	33536	VILLAGE OF HARRISON	DEWITT DEVELOPMENT LLC		3405 COMMERCE CT	APPLETON	54911	W5788 HWY 10
2	33540	VILLAGE OF HARRISON	PETER M VANZEELAND		W5719 WOODLAND RD	MENASHA	54952	W5719 WOODLAND RD
1.31	39442	VILLAGE OF HARRISON	JULIE K MOORE	RANDOLF J MOORE	N8813 COUNTY N	MENASHA	54952	N8807 COUNTY N
1.38	39444	VILLAGE OF HARRISON	RANDOLF J MOORE		N8813 COUNTY N	MENASHA	54952	N8813 COUNTY N
2.33	46194	VILLAGE OF HARRISON	DEWITT DEVELOPMENT LLC		1209 BOBBY CT	APPLETON	54915	
0.3	39448	VILLAGE OF HARRISON	JAMES STEFFANUS	BROOKE STEFFANUS	N8753 ZIRBEL DR	MENASHA	54952	ZIRBEL DR
3.75	33546	VILLAGE OF HARRISON	JAMES REFFKE	TIMOTHY REFFKE, et al.	1524 E. MARION STREET	APPLETON	54915	FRONTAGE RD
3.16	33548	VILLAGE OF HARRISON	JOZETTE R LONDRE		W5890 FRONTAGE RD	MENASHA	54952	W5890 FRONTAGE RD
3.9	33550	VILLAGE OF HARRISON	CHRISTOPHER T SUMMERS	JOZETTE R SUMMERS	W5890 FRONTAGE ROAD	MENASHA	54952	FRONTAGE RD
6.35	33556	VILLAGE OF HARRISON	JAMES FRANK ZWIERS		229 S SIDNEY ST	KIMBERLY	54136	W5880 FRONTAGE RD
1.14	33558	VILLAGE OF HARRISON	DEWITT DEVELOPMENT LLC		3405 COMMERCE CT	APPLETON	54911	FRONTAGE RD
0.84	39464	VILLAGE OF HARRISON	GREGORY CHRISTIE	CATHERINE CHRISTIE	N8715 ZIRBEL DR	MENASHA	54952	N8715 ZIRBEL DR
0.66	39478	VILLAGE OF HARRISON	JEROME A HAEN		57 BELLEVUE PL	APPLETON	54913	ZIRBEL DR
0.92	39486	VILLAGE OF HARRISON	NICKOLAS DEMARK		N8757 ZIRBEL DRIVE	MENASHA	54952	ZIRBEL DR
0.69	39488	VILLAGE OF HARRISON	LANCE HAEN		2525 S. ONEIDA STREET	APPLETON	54915	ZIRBEL DR
1.98	39490	VILLAGE OF HARRISON	JASON HAEN		2525 S. ONEIDA STREET	APPLETON	54915	ZIRBEL DR
0.75	44922	VILLAGE OF HARRISON	HENNING KEVIN L & CAROL G REVOCABLE TRUST	KEVIN L HENNING & CAROL G REVOCABLE TRUST	W6018 STRAWFLOWER DR	APPLETON	54915	N8804 S COOP RD
2.26	43846	VILLAGE OF HARRISON	VILLAGE OF HARRISON		W5298 HWY 114	MENASHA	54952	N8759 HWY 10 & 114
0.58	39536	VILLAGE OF HARRISON	JOSHUA H LAUX		N8566 NORTH SHORE RD	MEBASGA	54952	NORTH SHORE RD
1.8	39622	VILLAGE OF HARRISON	GAIL BEDNAROWSKI	GERALD BEDNAROWSKI	W6443 OLD HIGHWAY RD	MENASHA	54952	
1.5	39626	VILLAGE OF HARRISON	GOSS TIMOTHY R&SANDRA L REV TR		W6441 FIRE LANE 8	MENASHA	54952	FIRELANE 8
3.09	39616	VILLAGE OF HARRISON	CHAD R REINKE	AMANDA M REINKE	W6323 OLD HIGHWAY RD	MENASHA	54952	W6323 OLD HIGHWAY RD
0	39630	VILLAGE OF HARRISON	ROBERT T COON		W6477 FIRELANE 8	MENASHA	54952	
1.07	39642	VILLAGE OF HARRISON	KOLOSSO MARY JT REV LIV T	JOHN KOLOSSO	W6461 FIRELANE 8	MENASHA	54952	W6461 FIRELANE 8
0.6	39574	VILLAGE OF HARRISON	BEVERLY D REMMEL	DANIEL R REMMEL	W6257 OLD HIGHWAY RD	MENASHA	54952	W6257 OLD HIGHWAY RD
0.6	39592	VILLAGE OF HARRISON	DAVID H IHDE		PO BOX 54	NEENAH	54956	HWY 10 & 114
0.87	39696	VILLAGE OF HARRISON	KENNETH J STEIDL		W6597 FIRELANE 7	MENASHA	54952	W6597 FIRELANE 7
0	39676	VILLAGE OF HARRISON	STEVEN P SCHUH		W6594 FIRELANE 7	MENASHA	54952	FIRELANE 7
1.72	44074	VILLAGE OF HARRISON	STUMPF FAMILY ENTERPRISES LLC		N8840 S COOP RD	MENASHA	54952	HWY 10
1.7	39716	VILLAGE OF HARRISON	JOSEPH R EISCH		1039 BRIGHTON DRIVE	MENASHA	54952	FIRELANE 5
1.33	39732	VILLAGE OF HARRISON	HUGHES THOM & VICTORIA REV TR		W307 N2525 GOLF HILLS DR	PEWAUKEE	53072	W6777 FIRELANE 5
0.05	43110	VILLAGE OF HARRISON	JACOB MALZAHN	JOELLE MALZAHN	2448 LAKE COTTAGE CT	MENASHA	54952	HWY 10
0.6	42860	VILLAGE OF HARRISON	CRAIG L WEBORG		N8803 KERNAN AVE	MENASHA	54952	N8801 KERNAN AVE
0.17	44092	VILLAGE OF HARRISON	FRANK J DOMBROWSKI		N8824 HWY 10 & 114	MENASHA	54952	HWY 10 & 114
0.14	44096	VILLAGE OF HARRISON	THOMAS L DAY	BONNIE R DAY	W7170 HWY 10 & 114	MENASHA	54952	N8861 HWY 10 & 114
0.71	44102	VILLAGE OF HARRISON	SYNTHIA LAMBERT		607 GROVE ST	NEENAH	54956	FIRELANE 1
0.6	39818	VILLAGE OF HARRISON	DANIEL H WISNESKI		W7120 FIRELANE 2	MENASHA	54952	FIRELANE 2
0	39838	VILLAGE OF HARRISON	JEFFREY D WORTHEM	MARIA WORTHEM	1301 BRADLEY CT	SPRING GROVE	60081	W7135 FIRELANE 2
0.04	39808	VILLAGE OF HARRISON	HARRISON UTILITIES		N8722 COUNTY LP	MENASHA	54952	FIRELANE 1
0	39916	VILLAGE OF HARRISON	TERESA E WINTER	STEPHEN A WINTER	3305 N BALLARD RD STE C	APPLETON	54911	NORTH SHORE RD
5.84	39924	VILLAGE OF HARRISON	NORTH SHORE GOLF CLUB INC		N8421 NORTH SHORE WEST RD	MENASHA	54952	
0.9	39936	VILLAGE OF HARRISON	PEOTTER WILLIAM G REVOCABLE TRUST		N8455 STATE PARK ROAD	MENASHA	54952	HWY 114
5.1	39942	VILLAGE OF HARRISON	DIANE M KOSMOSKY		N8485 STATE PARK RD	MENASHA	54952	N8485 STATE PARK RD
1.29	39994	VILLAGE OF HARRISON	SHARON A HOEPPNER		2201 HAMPSTEAD CT	SAFETY HARBOR	34695	FIRELANE 12

0.97	40046	VILLAGE OF HARRISON	MATTHEW R ANDERSON	GABRIELLE M ANDERSON	1023 PENDLETON PARKWAY #72		NEENAH	54956	FIRELANE 12
0	40026	VILLAGE OF HARRISON	NICHOLAS C GRODE	JANET M GRODE	W5481 MIELKE RD		MENASHA	54952	
3.14	40140	VILLAGE OF HARRISON	JOAN C NATE		N8356 STATE PARK RD		MENASHA	54952	N8356 STATE PARK RD
2.11	45466	VILLAGE OF HARRISON	RALPH M HOPFENSBERGER	SUZANNE HOPFENSBERGER	N9277 HWY 55		KAUKAUNA	54130	STOMMEL RD
1.57	40220	VILLAGE OF HARRISON	ALLAN J HENSCHHEL		N8067 STOMMEL RD		SHERWOOD	54169	N8067 STOMMEL RD
0	40236	VILLAGE OF HARRISON	WYNBOOM DONALD C REVOC TRUST		N7933 STATE PARK RD		MENASHA	54952	
0	40238	VILLAGE OF HARRISON	WYNBOOM DONALD C REVOC TRUST		N7933 STATE PARK RD		MENASHA	54952	MIELKE RD
1.83	40240	VILLAGE OF HARRISON	WYNBOOM DONALD C REVOC TRUST		N7933 STATE PARK RD		MENASHA	54952	MIELKE RD
1.37	40256	VILLAGE OF HARRISON	MICHAEL J GABLER		N7949 STATE PARK RD		MENASHA	54952	PRIVATE RD
0.88	42350	VILLAGE OF HARRISON	MICHAEL J SCHMIDT		W4301 COUNTY KK		KAUKAUNA	54130	COUNTY KK
1.22	40350	VILLAGE OF HARRISON	EMILY GAPP	JEREMY GAPP	W4647 COUNTY KK		KAUKAUNA	54130	W4647 COUNTY KK
2.74	40536	VILLAGE OF HARRISON	ALLAN M DIX	JUDITH A DIX	W4437 SCHMIDT RD		KAUKAUNA	54130	SCHMIDT RD
3.61	40768	VILLAGE OF HARRISON	LINDA S EISMANN	EDWARD D EISMANN, et al.	N8192 STOMMEL RD		SHERWOOD	54169	STOMMEL RD
9	40984	VILLAGE OF HARRISON	CHRISTOPHER L MILLER	LESLEY A MILLER	N7484 HWY 114		MENASHA	54952	
0.3	38480	VILLAGE OF HARRISON	DENNIS J SONKOWSKY		N6865 HARRISON ROAD		HILBERT	54129	HARRISON RD
0.2	38492	VILLAGE OF HARRISON	DENNIS J SONKOWSKY		N6865 HARRISON ROAD		HILBERT	54129	N6861 HARRISON RD
2	38446	VILLAGE OF HARRISON	CAROL A PROBST JRT	ROBERT W PROBST	5744 LAH-MAYTAH		OSHKOSH	54901	W5393 HARRISON RD
6.15	38456	VILLAGE OF HARRISON	TIMOTHY A SCHMIDT	JILL M SCHMIDT JRT	W5541 FIRELANE 12		MENASHA	54952	HARRISON RD
0.757	38498	VILLAGE OF HARRISON	BEVERLY B VALENTINE	JAMES E VALENTINE	N6715 HARRISON RD		HILBERT	54129	HARRISON RD
0.56	38508	VILLAGE OF HARRISON	DAVID J ROEN	SHERI A ROEN	N6695 HARRISON RD		HILBERT	54129	N6695 HARRISON RD
0.34	38512	VILLAGE OF HARRISON	JAMES E VALENTINE	BEVERLY B VALENTINE, et al.	N6715 HARRISON ROAD		HILBERT	54129	N6709 HARRISON RD
0	38522	VILLAGE OF HARRISON	SCOTT L & GRETCHEN K ROMENESKO REV TRUST		N6741 HARRISON RD.		HILBERT	54129	N6741 HARRISON RD
21.29	38526	VILLAGE OF HARRISON	THIEL JERRY L REVOC LIV TRUST		623 FALCON LN		CHILTON	53014	N6551 LAKESHORE DR
0.77	38534	VILLAGE OF HARRISON	JOHN D GOMOLL	SUSAN J GOMOLL	N6679 HARRISON RD		HILBERT	54129	N6679 HARRISON RD
0.71	38536	VILLAGE OF HARRISON	JEREMY D GACKENHEIMER	KAYLA P GACKENHEIMER	W5696 ECKER LAKELAND RD		CHILTON	53014	HARRISON RD
0	38538	VILLAGE OF HARRISON	ANDREA OTTO	C/O ANDREA ZELLMER	N6605 HARRISON RD		HILBERT	54129	HARRISON RD
0	38540	VILLAGE OF HARRISON	JAMES E DECOSTER		N6613 HARRISON RD		HILBERT	54129	HARRISON RD
0	38544	VILLAGE OF HARRISON	RICHARD DECOSTER JR		N6597 HARRISON RD		HILBERT	54129	HARRISON RD
2.9	38692	VILLAGE OF HARRISON	VILLAGE OF HARRISON		W5298 HWY 114		MENASHA	54952	LAKESHORE DR
10	38702	VILLAGE OF HARRISON	ST THOMAS EPISCOPAL CHURCH CEMETERY MANSFIELD FAMILY		226 WASHINGTON ST HWY 55		MENASHA	54952	W5506 FARO SPRINGS RD
0.23	38816	VILLAGE OF HARRISON	RYAN J SCHOLZ	JENNIFER L KARLS	W4525 ERTL RD		MENASHA	54952	HWY 55
1.61	38844	VILLAGE OF HARRISON	JOST JOHN&GLORIA IR FAMILY TR		1396 PONDEROSA AVE		GREEN BAY	54313	FARO SPRINGS RD
37.62	38958	VILLAGE OF HARRISON	KIMBERLEY GIVENS		N8690 FIRELANE 6		MENASHA	54952	N8690 FIRELANE 6
0	41706	VILLAGE OF HARRISON	HARRISON UTILITIES		N8722 COUNTY LP		MENASHA	54952	FIRELANE 6
0	41752	VILLAGE OF HARRISON	HEIDI D HIGGINS TRUST		W6567 FIRELANE 8		MENASHA	54952	FIRELANE 8
0	41756	VILLAGE OF HARRISON	HEIDI D HIGGINS TRUST		W6567 FIRELANE 8		MENASHA	54952	FIRELANE 8
0	41768	VILLAGE OF HARRISON	MARK BENNETT	MINDY BENNETT	372 HUMBLE CIR		OREGON	53575	
0.22	41066	VILLAGE OF HARRISON	JEREMY D GRENZER		N6470 HARRISON RD		HILBERT	54129	
0.26	41068	VILLAGE OF HARRISON	DREWESKE JOHN P & SUSAN M LIVING TRUST		N6465 HARRISON RD		HILBERT	54129	
0.26	41070	VILLAGE OF HARRISON	DREWESKE JOHN P & SUSAN M LIVING TRUST		N6465 HARRISON RD		HILBERT	54129	
0.23	41072	VILLAGE OF HARRISON	GRAND BUTTERFLY PROD LLC		4 EARLING CT		OCONOMOWOC	53066	HARRISON RD
0.22	41074	VILLAGE OF HARRISON	GRAND BUTTERFLY PROD LLC		4 EARLING CT		OCONOMOWOC	53066	
0.23	41080	VILLAGE OF HARRISON	GRAND BUTTERFLY PROD LLC		4 EARLING CT		OCONOMOWOC	53066	HARRISON RD
0.22	41082	VILLAGE OF HARRISON	GRAND BUTTERFLY PROD LLC		4 EARLING CT		OCONOMOWOC	53066	HARRISON RD
0	41274	VILLAGE OF HARRISON	JUSTIN W & PATRICIA J SANDOZ LIVING TRUST		N8357 NORTH SHORE RD		MENASHA	54952	
0	41280	VILLAGE OF HARRISON	BRIEN P & MARY K BATLEY REV TRUST		427 PARK D		NEENAH	54956	

0	41284	VILLAGE OF HARRISON	MURPHY WM JR&LINDA JNT REV TRS		N8343 NORTH SHORE RD		MENASHA	54952	N8343 NORTH SHORE RD
0	41286	VILLAGE OF HARRISON	NANCY S ERICKSON REV TRUST	JOSEPH A SCHOUTEN JR	N8337 NORTH SHORE RD		MENASHA	54952	
0	41288	VILLAGE OF HARRISON	NANCY S ERICKSON REV TRUST	JOSEPH A SCHOUTEN JR	N8337 NORTH SHORE RD		MENASHA	54952	
0	41292	VILLAGE OF HARRISON	NANCY S ERICKSON REV TRUST	JOSEPH A SCHOUTEN JR	N8337 NORTH SHORE RD		MENASHA	54952	
0	41294	VILLAGE OF HARRISON	MARC E WEINSTEIN	EMILY M WEINSTEIN	N8323 NORTH SHORE RD		MENASHA	54952	
0	41298	VILLAGE OF HARRISON	MARC E WEINSTEIN	EMILY M WEINSTEIN	N8323 NORTH SHORE RD		MENASHA	54952	
3.46	46802	VILLAGE OF HARRISON	NORTH SHORE RIDGE LLC		229 E. WASHINGTON ST		APPLETON	54911	
0	41650	VILLAGE OF HARRISON	BURROWS FAMILY TRUST		13018 NW 148TH TERRACE		ALACHUA	32615	
0	41680	VILLAGE OF HARRISON	SHORE ACRES INC C/O J THOMAS		W6201 FIRELANE 9		MENASHA	54952	
1.47	41658	VILLAGE OF HARRISON	JENNIFER BEACH	ERICK GRIFFIN	112 RICHARD AVE		NEENAH	54956	FIRELANE 9
1.64	41660	VILLAGE OF HARRISON	BURROWS FAMILY TRUST		13018 NW 148TH TERRACE		ALACHUA	32615	FIRELANE 9
2.51	41662	VILLAGE OF HARRISON	BURROWS FAMILY TRUST		13018 NW 148TH TERRACE		ALACHUA	32615	FIRELANE 9
0.12	41666	VILLAGE OF HARRISON	LAURI KRUEGER	TODD KRUEGER	N8571 FIRELANE 10		MENASHA	54952	FIRELANE 10
0.19	41672	VILLAGE OF HARRISON	MATTHEW P SOMMER	JESSICA A STAGG	W6244 FIRELANE 9		MENASHA	54952	
0.81	41674	VILLAGE OF HARRISON	BURROWS FAMILY TRUST		13018 NW 148TH TERRACE		ALACHUA	32615	FIRELANE 9
0	41414	VILLAGE OF HARRISON	JEFFREY DAVID URBAN		W5671 FIRELANE 12		MENASHA,	54952	
0.375	41420	VILLAGE OF HARRISON	CHRISTINA BROOKS		1850 IRISH RD		NEENAH	54956	FIRELANE 12
0	41430	VILLAGE OF HARRISON	PETER B BESSER	PATRICIA H BESSER	222 E CHESTNUT STREET, APT #17A		CHICAGO	60611	FIRELANE 12
0	41432	VILLAGE OF HARRISON	CHAD R WEBER	KELLEY J WEBER	W5629 FIRELANE 12		MENASHA	54952	W5629 FIRELANE 12
0	41470	VILLAGE OF HARRISON	LEE A MACRANDER	STEPHANUS J MACRANDER	W5517 FIRELANE 12		MENASHA	54152	
0	41472	VILLAGE OF HARRISON	HATTON TODD E GAST KAREN E		W5511 FIRELANE 12		MENASHA	54952	
0	41184	VILLAGE OF HARRISON	DOUGLAS WILSON	JENNIFER WILSON	1129 HACKBERRY RD		DEERFIELD	60015	HARRISON RD
0	41188	VILLAGE OF HARRISON	DOUGLAS WILSON	JENNIFER WILSON	1129 HACKBERRY RD		DEERFIELD	60015	HARRISON RD
0	41208	VILLAGE OF HARRISON	MINH DO-MCKENZIE	LISA DO-MCKENZIE	N6569 HARRISON RD		HILBERT	54129	HARRISON RD
0	41134	VILLAGE OF HARRISON	BRYAN M PETERS	SARA M PETERS	W5691 FIRELANE 12		MENASHA	54952	W5691 FIRELANE 12
0	41158	VILLAGE OF HARRISON	JASON W LAMINE		W5753 FIRELANE 12		MENASHA	54952	FIRELANE 12
0	41160	VILLAGE OF HARRISON	TUSLER WILLIAM R REV TRUST		W5765 FIRELANE 12		MENASHA	54952	FIRELANE 12
0	41164	VILLAGE OF HARRISON	TUSLER WILLIAM R REV TRUST		W5765 FIRELANE 12		MENASHA	54952	FIRELANE 12
0	41166	VILLAGE OF HARRISON	MERCEDES ROSENBOHM		W5779 FIRELANE 12		MENASHA	54952	FIRELANE 12
0	41168	VILLAGE OF HARRISON	MERCEDES ROSENBOHM		W5779 FIRELANE 12		MENASHA	54952	FIRELANE 12
0	41590	VILLAGE OF HARRISON	KENNETH H WALTER	MARY K WALTER JRLT	3720 ROYALFERN CT		BONITA SPRINGS	34134	FIRELANE 8
0	41602	VILLAGE OF HARRISON	LAUREL R HOWARD-BOARDMAN	ARLEN K BOARDMAN	W6385 FIRELANE 8		MENASHA	54952	W6385 FIRELANE 8
0	41612	VILLAGE OF HARRISON	EDWARD J KLECKNER	KATHRYN M KLECKNER	W6366 FIRELANE 8		MENASHA	54952	FIRELANE 8
0	41614	VILLAGE OF HARRISON	CHARLES C CHENG	KAREN K CHENG LT	W6350 FIRELANE 8		MENASHA	54952	
0	41620	VILLAGE OF HARRISON	KAREN K CHENG LT	CHARLES C CHENG	W6350 FIRELANE 8		MENASHA	54952	W6350 FIRELANE 8
0	41320	VILLAGE OF HARRISON	JERRY J VANBERKEL		N6823 HARRISON ROAD		HILBERT	54129	N6823 HARRISON RD
0	41338	VILLAGE OF HARRISON	RYAN HETZEL	ALLISON SAJDAK-HETZEL	5266 JUNIPER LANE		WEST BEND	53095	N6781 HARRISON RD
0	41354	VILLAGE OF HARRISON	DM REVOC KIDDER	RP KIDDER	N6777 HARRISON RD		HILBERT	54129	HARRISON RD
0	41356	VILLAGE OF HARRISON	KIDDER RP & DM REVOC		N6777 HARRISON RD		HILBERT	54129	HARRISON RD
0	41360	VILLAGE OF HARRISON	KIDDER RP & DM REVOC		N6777 HARRISON RD		HILBERT	54129	HARRISON RD
0	41362	VILLAGE OF HARRISON	JENNIE SIGG		N6788 HARRISON RD		HILBERT	54129	HARRISON RD
0	41368	VILLAGE OF HARRISON	KATE L BRADLEY	SCOTT J BRADLEY	N6797 HARRISON RD		HILBERT	54129	HARRISON RD
0	41370	VILLAGE OF HARRISON	KATE L BRADLEY	SCOTT J BRADLEY	N6797 HARRISON RD		HILBERT	54129	HARRISON RD
0	41378	VILLAGE OF HARRISON	JACKSON VERKUILEN		N6826 HARRISON RD		HILBERT	54129	HARRISON RD
0	41382	VILLAGE OF HARRISON	BARBARA A ANNIS	MICHAEL I ANNIS	N7114 HWY 114		MENASHA	54952	HARRISON RD
0	41384	VILLAGE OF HARRISON	BARBARA A ANNIS	MICHAEL I ANNIS	N7114 HWY 114		MENASHA	54952	
0	41116	VILLAGE OF HARRISON	DAVID M KOEPKE	CAROL A KOEPKE	W5710 FIRELANE 12		MENASHA	54952	FIRELANE 12
0	41122	VILLAGE OF HARRISON	MITCHEL C METZLER		N8279 FIRELANE 12		MENASHA	54952	N8279 FIRELANE 12
0	41124	VILLAGE OF HARRISON	MITCHEL C METZLER		N8279 FIRELANE 12		MENASHA	54952	FIRELANE 12
0	41126	VILLAGE OF HARRISON	DELILAS M LUNIAK	TRUST	N9266 COUNTY ROAD N		APPLETON	54915	FIRELANE 12
0	41128	VILLAGE OF HARRISON	DELILAS M LUNIAK	TRUST	N9266 COUNTY ROAD N		APPLETON	54915	FIRELANE 12
0.22	44142	VILLAGE OF HARRISON	DAVID SEIDL		8879 PIONEER RD		LARSEN	54947	SHEA RD

0.17	44148	VILLAGE OF HARRISON	FREDERICK STINSKI		N9164 HARMON RD		MENASHA	54952	HARMON RD
0.41	44156	VILLAGE OF HARRISON	KDCD INVESTMENTS LLC		W7007 VERNA RD		MENASHA	54952	W7010 MANITOWOC RD
0.29	44180	VILLAGE OF HARRISON	CINDY C STORCH KLAPPS	GARY STORCH	W7061 VERNA RD		MENASHA	54952	VERNA RD
0.22	44182	VILLAGE OF HARRISON	PETER J SWIERTZ	LYNNETTE M SWIERTZ	W7098 MANITOWOC ROAD		MENASHA	54952	SHEA RD
0.22	44206	VILLAGE OF HARRISON	CHANG HER		W7080 MANITOWOC RD.		MENASHA	54952	MANITOWOC RD
0	34062	VILLAGE OF HARRISON	JAMES J TEWS	SANDRA J TEWS	N9562 OTTE CT		APPLETON	54915	OTTE CT
0	34088	VILLAGE OF HARRISON	JOHN FRITZ	FRITZ JOYCE H IR RE TR	N9649 MARY DR		APPLETON	54915	MARY DR
0	34100	VILLAGE OF HARRISON	HERMAN J MAES	PATRICIA A MAES	N9603 MARY DR		APPLETON	54915	MARY DR
0	34104	VILLAGE OF HARRISON	HERMAN J MAES	PATRICIA A MAES	N9603 MARY DR		APPLETON	54915	MARY DR
0	41228	VILLAGE OF HARRISON	ADAM R STILES	AMBER J MORENO	W6481 LAKEVIEW CT		MENASHA	54952	W6481 LAKEVIEW CT
0	41242	VILLAGE OF HARRISON	EMILY SABIN		W6453 LAKEVIEW CT		MENASHA	54952	W6445 LAKEVIEW CT
0	41252	VILLAGE OF HARRISON	MICHAEL P DAMROW	TRICIA K ROSS	W6425 LAKEVIEW CT		MENASHA	54952	LAKEVIEW CT
0	41504	VILLAGE OF HARRISON	LONDON L VOMASTIC	KATIE N VOMASTIC	N8685 FIRELANE 9		MENASHA	54952	N8685 FIRELANE 9
0	34270	VILLAGE OF HARRISON	JEFFERY R STROBEL	JESSICA L STROBEL	W5595 RUSTIC LN		APPLETON	54915	W5589 RUSTIC LN
0	34136	VILLAGE OF HARRISON	N9671 GINA DR LLC		PO BOX 342		CHILTON	53014	N9671 GINA DR
0	34138	VILLAGE OF HARRISON	BOYD DIETZEN CONSTRUCTION INC		108 SHALIMAR CT		COMBINED LOCKS	54113	W5615 COUNTY KK
0.17	33690	VILLAGE OF HARRISON	MONICA HORN		N9692 NOE RD		APPLETON	54915	
0.02	33692	VILLAGE OF HARRISON	CRYSTAL C ROTHER	JOHN M ROTHER	N9678 SHEPHERD LN		APPLETON	54915	SHEPHERD LN
0	33696	VILLAGE OF HARRISON	XI LIN		N9606 NOE RD		APPLETON	54915	
0	34360	VILLAGE OF HARRISON	JAMES ECKES	REBECCA ECKES	N9574 HANDEL DR		APPLETON	54915	N9574 HANDEL DR
0.55	34278	VILLAGE OF HARRISON	NICHOLAS R BEHNKE	TARA A BEHNKE	N9524 HICKORY DRIVE		APPLETON	54195	N9524 HICKORY DR
0.24	34780	VILLAGE OF HARRISON	TRACEY VANDERWIELEN		N9521 ANDREW DR		APPLETON	54915	N9521 ANDREW DR
0	34692	VILLAGE OF HARRISON	CALEY L MIELKE	MICHAEL S MIELKE	N9574 GARNET CT		APPLETON	54915	N9574 GARNET CT
0.28	34724	VILLAGE OF HARRISON	PAUL K RADTKE	TAMMY M RADTKE	W5990 GARNET DR		APPLETON	54915	W5990 GARNET DR
0.74	33984	VILLAGE OF HARRISON	XI LIN		10881 SKYLARK MANOR CT		JACKSONVILLE	32257	W6016 CAMEO CT
0.64	33986	VILLAGE OF HARRISON	SHAE M ELLEFSON		W6017 CAMEO CT		APPLETON	54915	W6017 CAMEO CT
0.38	33992	VILLAGE OF HARRISON	AIMEE L LARSON		W6041 CAMEO COURT		APPLETON	54915	W6041 CAMEO CT
0	33818	VILLAGE OF HARRISON	NATHAN P MAAS	EMMA JO L MAAS	N9630 DARBOY DR.		APPLETON	54915	N9630 DARBOY DR
0	33820	VILLAGE OF HARRISON	DAVID F BISHOP	SHERRY L BISHOP	N9632 DARBOY DR		APPLETON	54915	DARBOY DR
0.04	33876	VILLAGE OF HARRISON	NATHAN P MAAS	EMMA JO L MAAS	N9630 DARBOY DR.		APPLETON	54915	DARBOY DR
0.99	33900	VILLAGE OF HARRISON	ZEB LLC		8534 SOUTH BURHAM AVENUE		CHICAGO	60617	N9516 SILVER CT
0.81	33928	VILLAGE OF HARRISON	MICHAEL T LARSON	MARY K LARSON	N9519 DARBOY CT		APPLETON	54915	N9519 DARBOY CT
0	33966	VILLAGE OF HARRISON	KAREN M SCHMELZER		N9607 DARBOY DRIVE		APPLETON	54915	N9607 DARBOY DR
0	34964	VILLAGE OF HARRISON	MARK A SANDERS	DEANNA M SANDERS	W5950 PEACEFUL LANE		HARRISON	54915	W5950 PEACEFUL LN
0.33	34910	VILLAGE OF HARRISON	CHAD BAETEN		W5559 HOLLY STREET		APPLETON	54915	W5559 HOLLY ST
0.65	41488	VILLAGE OF HARRISON	LOPAS TRUST		W6362 RAVINE COURT		MENASHA	54952	RAVINE CT
0.7	41492	VILLAGE OF HARRISON	SCOT T GRISHABER		W6342 RAVINE CT		MENASHA	54952-9683	RAVINE CT
0	41520	VILLAGE OF HARRISON	NORTH SHORE LN PROPERTY OWNERS		N8337 NORTH SHORE LN		MENASHA	54952	NORTH SHORE RD
0	41572	VILLAGE OF HARRISON	JACK G RING JR		W5856 ROYALTRON DR		MENASHA	54952	W5856 ROYALTRON DR
0.44	34984	VILLAGE OF HARRISON	DEAN G BIRLING	MICHELLE D BIRLING	N9484 NOE RD		APPLETON	54915	N9480 NOE RD
0	38758	VILLAGE OF HARRISON	CALUMET COUNTY HWY 10/114 ROW				CHILTON	53014	HWY 114
0	41310	VILLAGE OF HARRISON	VILLAGE OF HARRISON		W5298 HWY 114		MENASHA	54952	HARRISON RD
0.781	42140	VILLAGE OF HARRISON	VILLAGE OF HARRISON		STORM WATER DETENTION POND		APPLETON	54915	TURNBERRY DR
1.24	42190	VILLAGE OF HARRISON	VILLAGE OF HARRISON		W5298 HWY 114		MENASHA	54952	NORTH SHORE RD
1.61	45592	VILLAGE OF HARRISON	ATLAS DEVELOPMENTS & CONSTRUCTION LLC		N8641 WINDING TRAIL DR		MENASHA	54952	W5909 OLD HIGHWAY RD
5.912	38428	VILLAGE OF HARRISON	CHARLES A GEHL JR	WENDY M GEHL	W5000 ERTL RD		MENASHA	54952	W5000 ERTL RD
7.14	42362	VILLAGE OF HARRISON	VILLAGE OF HARRISON		W5298 HWY 114		MENASHA	54952	HWY 10 & 114
4.06	45208	VILLAGE OF HARRISON	TRENT T NOVOTNY		W6483A DESIGN DR		GREENVILLE	54942	AMY AVE
0.806	41712	VILLAGE OF HARRISON	ROBERT M BERKHOLTZ		135 OAK GROVE LN		YELLVILLE	72687	FIRELANE 6
8	38862	VILLAGE OF HARRISON	PAUL MANDERFIELD	LORI MANDERFIELD	W6083 GOLDEN CT		APPLETON	54915	HARRISON RD
1.315	37990	VILLAGE OF HARRISON	VILLAGE OF HARRISON		W5298 HWY 114		MENASHA	54952	BLACKOAK ST
0.319	38106	VILLAGE OF HARRISON	ANNA ROMENESKO		N8944 BLACKOAK STREET		MENASHA	54952	N8944 BLACKOAK ST
0.319	38104	VILLAGE OF HARRISON	MURPHY M OHEARN		N8952 BLACKOAK STREET		MENASHA	54952	N8952 BLACKOAK ST
0.287	38092	VILLAGE OF HARRISON	MAAS CURT J & VICKI G REVOCABLE TRUST		W6404 DOGWOOD LN		MENASHA	54952	W6410 DOGWOOD LN

1	33444	VILLAGE OF HARRISON	MARY SUE STRECK	ROBERT W STRECK	N8990 LAKE PARK RD		MENASHA	54952	
0.378	38122	VILLAGE OF HARRISON	MICHAEL T REKERS	GINA R REKERS	W6468 CHERRYBARK CIR		MENASHA	54952	W6468 CHERRYBARK CIR
4.95	40804	VILLAGE OF HARRISON	BRIAN J NETTEKOVEN	NETTEKOVEN MOLLY DIEDRICH A	2524 SOUTHERLAND CIRCLE		KAUKAUNA	54130	SCHAEFER RD
2.58	37342	VILLAGE OF HARRISON	VILLAGE OF HARRISON		W5298 HWY 114		MENASHA	54952	N EVAN ST
4.88	40664	VILLAGE OF HARRISON	JEAN T KESSLER		W4891 HWY 10		MENASHA	54952	W4891 HWY 10
6.28	43840	VILLAGE OF HARRISON	VANS REALTY & CONSTRUCTION OF APPLETON INC		2525 S ONEIDA ST		APPLETON	54915	LAKE PARK RD
0.34	45940	VILLAGE OF HARRISON	LEXINGTON HOMES INC		1256 CENTENNIAL CENTRE BLVD		ONEIDA	54155	N9315 GEMSTONE CT
2.269	43838	VILLAGE OF HARRISON	VANS REALTY & CONSTRUCTION OF APPLETON INC		2525 S ONEIDA ST		APPLETON	54915	LAKE PARK RD
5.22	40754	VILLAGE OF HARRISON	BILLIBOB J BOOR		PO BOX 714		NEENAH	54957	STOMMEL RD
0.4	39408	VILLAGE OF HARRISON	STATE OF WI DOT HWY 10&114/ROW		101 S WEBSTER ST		MADISON	53707	W5698 HWY 114
0.12	37906	VILLAGE OF HARRISON	KIMBERLY AREA SCHOOL DISTRICT		217 E KIMBERLY AVE	PO BOX 159	COMBINED LOCKS	54113	W6089 NOLAN DR
1.81	39998	VILLAGE OF HARRISON	COREY C STUMPF	KRISTY M STUMPF	N8340 FIRELANE 12		MENASHA	54952	FIRELANE 12
1.4	42330	VILLAGE OF HARRISON	BRIAN J HOFMANN		W4663 DALLAS DR		KAUKAUNA	54130	W4663 DALLAS DR
1.15	42322	VILLAGE OF HARRISON	TYLER LAABS	KIMBERLY LAABS	W6041 NETTIE DR		APPLETON	54915	N9615 TYLER LN
1.05	42326	VILLAGE OF HARRISON	JAY GLENN BOWERS	JANIS KAY BOWERS	W4674 DALLAS DR		KAUKAUNA	54130	W4674 DALLAS DR
2.5	42306	VILLAGE OF HARRISON	VILLAGE OF HARRISON		W5298 HWY 114		MENASHA	54952	W4686 DALLAS DR
1.21	42324	VILLAGE OF HARRISON	RICHARD M FREDERICKSON		N9649 BIES ROAD		KAUKAUNA	54130	N9649 BIES RD
0	33720	VILLAGE OF HARRISON	ANTHONY M ZASTROW	EMILY A ZASTROW	W5865 COUNTY ROAD KK		APPLETON	54915	W5877 COUNTY KK
0.95	38210	VILLAGE OF HARRISON	RONALD SENIUK		W6477 OLD HIGHWAY RD		MENASHA	54952	OLD HIGHWAY RD
2.39	32646	VILLAGE OF HARRISON	DAVID J FISHER	PAULA M FISHER	W5401 SCHMIDT RD		APPLETON	54915	W5401 SCHMIDT RD
2.46	32648	VILLAGE OF HARRISON	PAUL ANZELMO	DEBORAH ANZELMO	W5447 SCHMIDT RD		APPLETON	54915	W5447 SCHMIDT RD
0.32	38224	VILLAGE OF HARRISON	KALEE J HEINZMAN		W5977 DAFFODIL DR		APPLETON	54915	W5977 DAFFODIL DR
0.4	38280	VILLAGE OF HARRISON	ERIN N VERTIN		W2419 BLOCK RD		APPLETON	54915	W5963 GERANIUM DR
0.35	38254	VILLAGE OF HARRISON	CHARLENE D ZETTLER	MARK G BOOTZ	W5987 BLUE BONNETT DR		APPLETON	54915	W5987 BLUE BONNET DR
1.04	38208	VILLAGE OF HARRISON	RONALD SENIUK		W6477 OLD HIGHWAY RD		MENASHA	54952	OLD HIGHWAY RD
1.14	38206	VILLAGE OF HARRISON	RONALD SENIUK		W6477 OLD HIGHWAY RD		MENASHA	54952	OLD HIGHWAY RD
4.25	38356	VILLAGE OF HARRISON	VILLAGE OF HARRISON		W5298 HWY 114		MENASHA	54952	SONNY DR
1	40566	VILLAGE OF HARRISON	RICHARD DAVIS	VALERY DAVIS	N9049 N HARWOOD RD		MENASHA	54952	
0.23	42562	VILLAGE OF HARRISON	JUSTIN ENGLAND	LISA ENGLAND	W6051 RYFORD ST		MENASHA	54952	W6051 RYFORD ST
0	34038	VILLAGE OF HARRISON	AMY M GOETZ	THOMAS B BEHNKE	N9625 OTTE CT		APPLETON	54915	N9625 OTTE CT
0.19	38166	VILLAGE OF HARRISON	CARL D FISHER	LORI A FISHER	2811 OTTO COURT		GREEN BAY	54313	N9024 PAPERMAKER PASS
0.19	38162	VILLAGE OF HARRISON	FRANCES E NELSON LIVING TRUST		N9036 PAPERMAKER PASS		MENASHA	54952	N9036 PAPERMAKER PASS
0.7	38138	VILLAGE OF HARRISON	VILLAGE OF HARRISON		W5298 HWY 114		MENASHA	54952	W6289 KIMBERLY TRL
0.19	38180	VILLAGE OF HARRISON	ALEXANDER DORN	MALLORY DEVINE	N9023 PAPERMAKER PASS		MENASHA	54952	N9023 PAPERMAKER PASS
0.2	42416	VILLAGE OF HARRISON	SHARON K GROTHE		N9033 LILAC ROAD		MENASHA	54952	N9033 LILAC RD
0.2	42414	VILLAGE OF HARRISON	LEON W MALONE	LORI A MALONE	N9039 LILAC ROAD		MENASHA	54952	N9039 LILAC RD
0.18	42434	VILLAGE OF HARRISON	LINDA ROSS		N9052 LILAC RD		MENASHA	54952	N9052 LILAC RD
0.19	42436	VILLAGE OF HARRISON	DAVID P DUCHARME	BARBARA L DUCHARME	N9058 LILAC ROAD		MENASHA	54952	N9058 LILAC RD
0.18	42438	VILLAGE OF HARRISON	DUSTIN VARICK	ABBY VARICK	N9062 LILAC ROAD		MENASHA	54952	N9062 LILAC RD
0.19	42440	VILLAGE OF HARRISON	CARISSA VARICK		N9066 LILAC ROAD		MENASHA	54952	N9066 LILAC RD
0.19	42404	VILLAGE OF HARRISON	ROSA A KLEIN		N9071 LILAC RD		MENASHA	54952	N9071 LILAC RD
0.19	42442	VILLAGE OF HARRISON	KAREN L LORENZEN		N9072 LILAC ROAD		MENASHA	54952	N9072 LILAC RD
0.19	42402	VILLAGE OF HARRISON	RANDALL PREISLER	ANDREW DUNNY	N9077 LILAC ROAD		MENASHA	54952	N9077 LILAC RD
0.24	42444	VILLAGE OF HARRISON	TRAVIS J REBMAN	AMANDA N REBMAN	N9078 LILAC ROAD		MENASHA	54952	N9078 LILAC RD
0.22	42392	VILLAGE OF HARRISON	ERIN E YOUNGWORTH	MATTHEW P YOUNGWORTH	W6302 CHAMPION TRAIL		MENASHA	54952	W6302 CHAMPION TRL
0.22	42394	VILLAGE OF HARRISON	ANGELA MAIN		W6308 CHAMPION TRAIL		MENASHA	54952	W6308 CHAMPION TRL
0.3	42396	VILLAGE OF HARRISON	MICHAEL E WENGER	SONJIA M WENGER	W6312 CHAMPION TRAIL		MENASHA	54952	W6312 CHAMPION TRL
2.78	42476	VILLAGE OF HARRISON	GARNERS CREEK COMM STORM WATER		UTILITY	405 WALLACE ST	COMBINED LOCKS	54113	COUNTY N
0.31	43308	VILLAGE OF HARRISON	KARRIE STANKE	RYAN STANKE	W5799 PARKER WAY		APPLETON	54915	W5799 PARKER WAY
0.31	43320	VILLAGE OF HARRISON	THOMAS R HARPER	DIANNE E HARPER	W5804 HOELZEL WAY		APPLETON	54915	W5804 HOELZEL WAY
0.23	42564	VILLAGE OF HARRISON	KEVIN BROOKS	AMY BROOKS	W6057 RYFORD ST		MENASHA	54952	W6057 RYFORD ST

0.23	42572	VILLAGE OF HARRISON	J TERRY ZIEGLER		W6085 RYFORD ST		MENASHA	54952	W6085 RYFORD ST
0.23	42544	VILLAGE OF HARRISON	ALAN J BERGSTROM	REBECCA A BERGSTROM	13500 N ATALAYA WAY		ORO VALLEY	85755	W6066 RYFORD ST
0.23	42554	VILLAGE OF HARRISON	MICHAEL T TREU	SHERI L TREU	W6032 RYFORD STREET		MENASHA	54952	W6032 RYFORD ST
0.34	42626	VILLAGE OF HARRISON	JAMES ROOYAKKERS	PATRICIA ROOYAKKERS	N8907 HARRISVILLE COURT		MENASHA	54952	N8907 HARRISVILLE CT
0.36	42596	VILLAGE OF HARRISON	ALAN J LAMERS		N9062 SOUTHTOWNE DR		MENASHA	54952	N8912 HARRISVILLE CT
0.31	42604	VILLAGE OF HARRISON	LEAH PETERSON	KOREY PETERSON	N8948 HARRISVILLE CT		MENASHA	54952	N8948 HARRISVILLE CT
0.37	42616	VILLAGE OF HARRISON	ANDREW EICHSTAEDT	KRISTEN EICHSTAEDT	N8947 HARRISVILLE COURT		MENASHA	54952	N8947 HARRISVILLE CT
0.34	42614	VILLAGE OF HARRISON	DANIEL J GARBER	LISA M GARBER	N8957 HARRISVILLE CT		MENASHA	54952	N8957 HARRISVILLE CT
0.43	42608	VILLAGE OF HARRISON	MICHELLE L MEIER		416 SOUTH BUCHANAN ST		APPLETON	54915	N8962 HARRISVILLE CT
0.46	42612	VILLAGE OF HARRISON	KAYLA M ENNEPER	SHAWN R ENNEPER	N8963 HARRISVILLE CT		MENASHA	54952	N8963 HARRISVILLE CT
0.72	44492	VILLAGE OF HARRISON	MICHAEL S BEVERS	HEATHER J BEVERS	W6387 DOGWOOD LN		MENASHA	54952	W6387 DOGWOOD LN
0.31	42902	VILLAGE OF HARRISON	ERIK S RAY	KATHERINE L COLLINGS RAY	W5791 PARKER WAY		APPLETON	54915	W5791 PARKER WAY
0.42	42894	VILLAGE OF HARRISON	CAVANAUGH DOUGLAS J & HEATHER J LIVING TRUST	HEATHER J CAVANAUGH, et al.	W5766 PARKER WAY		APPLETON	54915	W5766 PARKER WAY
0.47	42920	VILLAGE OF HARRISON	LISA L PENDLETON	PETER J PENDLETON	W5725 MASE CT		APPLETON	54915	W5725 MASE CT
0.57	42908	VILLAGE OF HARRISON	SCOTT DEAN	ANNE DEAN	W5773 PARKER WAY		APPLETON	54915	W5773 PARKER WAY
0.5	42938	VILLAGE OF HARRISON	KIRK GALLANT	HEATHER A JUNEK	W5753 PARKER WAY		APPLETON	54915	W5753 PARKER WAY
0.35	42932	VILLAGE OF HARRISON	KEVIN G SCHNEIDER	LINDA L SCHNEIDER	W5710 MASE CT		APPLETON	54915	W5710 MASE CT
0.56	42944	VILLAGE OF HARRISON	GREGORY S DRUSCH	CHELSEA E DRUSCH	W5741 PARKER WAY		APPLETON	54915	W5741 PARKER WAY
0.38	42946	VILLAGE OF HARRISON	MAI XIONG	DENNIS PALMER	W5739 PARKER WAY		APPLETON	54915	W5739 PARKER WAY
0.45	43346	VILLAGE OF HARRISON	CHRISTIAN J TUINSTRA	MAYA N TUINSTRA	N9443 EMILY LN		APPLETON	54915	N9443 EMILY LN
0.28	43322	VILLAGE OF HARRISON	AMANDA L HARGROVE	MICHAEL A HARGROVE	W5805 HOELZEL WAY		APPLETON	54915	W5805 HOELZEL WAY
0.33	43358	VILLAGE OF HARRISON	MEGEAN LAUSON		N9440 EMILY LANE		APPLETON	54915	N9440 EMILY LN
0.33	43356	VILLAGE OF HARRISON	JOSHUA C PIPKORN	ANDRIA A PIPKORN	N9446 EMILY LANE		APPLETON	54915	N9446 EMILY LN
0.33	43354	VILLAGE OF HARRISON	DANIEL L SCHARENBRUCK	PAMELA J SCHARENBRUCK	N9450 EMILY LANE		APPLETON	54915	N9450 EMILY LN
0.36	43352	VILLAGE OF HARRISON	STEVEN HOOYMAN		N9454 EMILY LANE		APPLETON	54915	N9454 EMILY LN
0.28	43324	VILLAGE OF HARRISON	ELIZABETH M KINGTON	MICHAEL R KINGTON	W5813 HOELZEL WAY		APPLETON	54915	W5813 HOELZEL WAY
0.66	43338	VILLAGE OF HARRISON	ALEX NELSON	NATALIE NELSON	N9419 EMILY LN		APPLETON	54915	N9419 EMILY LN
0.53	43340	VILLAGE OF HARRISON	BRIAN CROWE	SARAH CROWE	N9425 EMILY LN		APPLETON	54915	N9425 EMILY LN
0.54	43344	VILLAGE OF HARRISON	BART J THEBO	KARA A THEBO	N9437 EMILY LN		APPLETON	54915	N9437 EMILY LN
0.44	44524	VILLAGE OF HARRISON	TIM RAUSCH JR		N9395 ROSELLA DR		APPLETON	54915	N9395 ROSELLA DR
2.5	43830	VILLAGE OF HARRISON	MICHAEL SCHAFFER	BARBARA SCHAFFER	N8761 COOP RD		MENASHA	54952	N8761 S COOP RD
2.95	33622	VILLAGE OF HARRISON	MARK H JANSSEN		118 W GREENFIELD DR		LITTLE CHUTE	54140	W6142 WILZ CT
0.35	43856	VILLAGE OF HARRISON	STEVEN S PUCKETT	KIMBERLY H PUCKETT	W5726 PARKER COURT		APPLETON	54915	W5726 PARKER CT
0.42	43858	VILLAGE OF HARRISON	CHRISTOPHER SEARL	LAUREN SEARL	W5718 PARKER CT		APPLETON	54915	W5718 PARKER CT
0.3	43870	VILLAGE OF HARRISON	DUSTY W RESCHKE	COREY A RESCHKE	W5724 JOCHMANN DRIVE		APPLETON	54915	W5724 JOCHMANN DR
0.62	43872	VILLAGE OF HARRISON	VETALEY STASHENKO	GALINA STASHENKO	11384 41ST CT N		WEST PALM BEACH	33411	W5714 JOCHMANN DR
0.23	43900	VILLAGE OF HARRISON	GREGORY A PETERHANS	KATIE M PETERHANS	W6029 ZACH STREET		MENASHA	54952	W6029 ZACH ST
0.23	43904	VILLAGE OF HARRISON	MOISES MENDOZA	MARIA MENDOZA VARGAS	W6043 ZACH ST		MENASHA	54952	W6043 ZACH ST
0.23	43912	VILLAGE OF HARRISON	RACHEL D KRUMMEN		W6069 ZACH STREET		MENASHA	54952	W6069 ZACH ST
0.23	43914	VILLAGE OF HARRISON	RACHEL CRIBBS	KIERRE CRIBBS	475 ALBERT WAY		APPLETON	54915	W6077 ZACH ST
0.23	43916	VILLAGE OF HARRISON	JOSEPH SECOLA	AMANDA K SECOLA	W6083 ZACH ST.		MENASHA	54952	W6083 ZACH ST
0.23	43898	VILLAGE OF HARRISON	ZACHARY N STUMPF		W6030 ZACH STREET		MENASHA	54952	W6030 ZACH ST
0.23	43892	VILLAGE OF HARRISON	JONATHAN L PROBST	KAILA R PROBST	W6050 ZACH ST		MENASHA	54952	W6050 ZACH ST
0.23	43890	VILLAGE OF HARRISON	ERIC E EDSON	SHALON M EDSON	W6056 ZACH ST		MENASHA	54952	W6056 ZACH ST
0.23	43884	VILLAGE OF HARRISON	NATHANIEL J CARD	MARI E CARD	W6078 ZACH ST		MENASHA	54952	W6078 ZACH ST
0.23	43882	VILLAGE OF HARRISON	ANDREW FERMANICH	KIMBERLY FERMANICH	W6084 ZACH STREET		MENASHA	54952	W6084 ZACH ST
0.3	43880	VILLAGE OF HARRISON	JUSTIN ANTHONY	KELLY ANTHONY	W6092 ZACH ST		MENASHA	54952	W6092 ZACH ST
0.31	44916	VILLAGE OF HARRISON	JULIE M HIGLEY		W5993 ZACH ST		MENASHA	54952	W5993 ZACH ST
2.39	38468	VILLAGE OF HARRISON	JAMES T HARRISON	CAROLYN HARRISON	508 BALD KNOB RD		JOHNSBURG	60051	N6881 HARRISON RD
1.15	44488	VILLAGE OF HARRISON	ANDY M WOLDT	KRISTI L WOLDT	W4887 MUSTANG DR		SHERWOOD	54169	N8748 ZIRBEL DR
0.05	44494	VILLAGE OF HARRISON	VILLAGE OF HARRISON		W5298 HWY 114		MENASHA	54952	SWEETGRASS TRL
0.85	33460	VILLAGE OF HARRISON	VILLAGE OF HARRISON		W5298 HWY 114		MENASHA	54952	W6390 DOGWOOD LN
0.35	44490	VILLAGE OF HARRISON	TYLER J ROMENESKO	LISA M ROMENESKO	W6395 DOGWOOD LN		MENASHA	54952	W6395 DOGWOOD LN
0.47	45366	VILLAGE OF HARRISON	JENNA SCHNEIDER	ADAM SCHNEIDER	N3904 DUSTY DR		APPLETON	54915	N9304 DUSTY DR
1.5	43832	VILLAGE OF HARRISON	NATHAN R DEMSKI	MARGARET E DEMSKI	W6132 WILZ COURT		MENASHA	54952	W6132 WILZ CT
1.27	44054	VILLAGE OF HARRISON	CALUMET COUNTY		206 COURT ST		CHILTON	53014	LAKE PARK RD
0.34	44670	VILLAGE OF HARRISON	SOLOMON HER		N9385 ROSELLA DR		APPLETON	54915	N9385 ROSELLA DR
0.34	44526	VILLAGE OF HARRISON	MATTHEW MACUMBER	ANGELA MACUMBER	W5678 HOELZEL WAY		APPLETON	54915	W5678 HOELZEL WAY

0.38	44620	VILLAGE OF HARRISON	GENE LANSER	ROBERTA LANSER	W5644 JONES WAY		APPLETON	54915	W5644 JONES WAY
0.31	44532	VILLAGE OF HARRISON	DAVID R & EMILY E TUPEK REV TRUST		W5654 HOELZEL WAY		APPLETON	54915	W5654 HOELZEL WAY
0.31	44534	VILLAGE OF HARRISON	JASON WACHTENDONK	JANEL WACHTENDONK	W5646 HOELZEL WAY		APPLETON	54915	W5646 HOELZEL WAY
0.31	44536	VILLAGE OF HARRISON	JENNIFER ANN ANDERSON	JOHN VINCENT BERRY	W5638 HOELZEL WAY		APPLETON	54915	W5638 HOELZEL WAY
0.33	44550	VILLAGE OF HARRISON	MAXWELL J BORNEMANN		W5582 HOELZEL WAY		APPLETON	54915	W5582 HOELZEL WAY
0.32	44652	VILLAGE OF HARRISON	DANIELLE A SCHMITZ	NICHOLAS R SCHMITZ	N9334 VARSITY LANE		APPLETON	54915	N9334 VARSITY LN
0.33	44622	VILLAGE OF HARRISON	JEFFREY J TEIGEN	NICOLE J TEIGEN	W5636 JONES WAY		APPLETON	54915	W5636 JONES WAY
0.35	44654	VILLAGE OF HARRISON	COREY ROBERTS		1201 KATHLEEN CT		APPLETON	54915	N9335 VARSITY LN
0.32	44626	VILLAGE OF HARRISON	CHARLES REED	SARA REED	N9333 MULHOLLAND LN		APPLETON	54915	N9333 MULHOLLAND LN
0.32	44650	VILLAGE OF HARRISON	ZACHARY PRENDERGAST	KAY PRENDERGAST	N9342 VARSITY LN		APPLETON	54915	N9342 VARSITY LN
0.35	44656	VILLAGE OF HARRISON	JENNA L GUTBROD	JACOB R GUTBROD	N9343 VARSITY LN		APPLETON	54915	N9343 VARSITY LN
0.33	44628	VILLAGE OF HARRISON	KENNETH COURNOYER	JULIE COURNOYER	N9431 MULHOLLAND LANE		APPLETON	54915	N9341 MULHOLLAND LN
0.39	44648	VILLAGE OF HARRISON	ANDREW J MENDOZA	CHRISTINE M MENDOZA	1930 DEBRUIN RD		KAUKAUNA	54130	N9350 VARSITY LN
0.33	44630	VILLAGE OF HARRISON	WADE M LEIPOLD	VALERIE M LEIPOLD	N9349 MULHOLLAND LANE		APPLETON	54915	N9349 MULHOLLAND LN
0.34	44660	VILLAGE OF HARRISON	ADAM HOBLER	SARAH HOBLER	N9359 VARSITY LN		APPLETON	54915	N9359 VARSITY LN
0.38	44646	VILLAGE OF HARRISON	ROB W LIEBHABER	JAMIE M LIEBHABER	N9358 VARSITY LN		APPLETON	54915	N9358 VARSITY LN
0.33	44632	VILLAGE OF HARRISON	TANNER J MAULICK	TAYLER L MAULICK	N9357 MULHOLLAND LN		APPLETON	54915	N9357 MULHOLLAND LN
0.33	44662	VILLAGE OF HARRISON	ALLISON JENSSEN	FREDRIK JENSSEN	N9367 VARSITY LN		APPLETON	54915	N9367 VARSITY LN
0.33	44644	VILLAGE OF HARRISON	SUSAN FELKER	MARTIN FELKER	N9366 VARSITY LANE		APPLETON	54915	N9366 VARSITY LN
0.33	44634	VILLAGE OF HARRISON	NATHAN J MALEWISKI	LISA A MALEWISKI	N9365 MULHOLLAND LN		APPLETON	54915	N9365 MULHOLLAND LN
0.33	44664	VILLAGE OF HARRISON	BOBBI J PROPPSON	BENJAMIN L PROPPSON	N9375 VARSITY LN		APPLETON	54915	N9375 VARSITY LN
0.33	44642	VILLAGE OF HARRISON	MATTHEW P MAHANEY	SARAH E MAHANEY	N9374 VARSITY LANE		APPLETON	54915	N9374 VARSITY LN
0.33	44636	VILLAGE OF HARRISON	DAVID J GAGNON	COURTNEY A GAGNON	N9373 MULHOLLAND LN		APPLETON	54915	N9373 MULHOLLAND LN
0.52	44572	VILLAGE OF HARRISON	NATHANIEL R VANHORN III	TANYA L VANHORN	N9307 TOUCHDOWN DR		APPLETON	54915	N9307 TOUCHDOWN DR
0.54	44570	VILLAGE OF HARRISON	STACY HEJDAK	JOSEPH WUSTRACK JP	N9306 TOUCHDOWN DR		APPLETON	54915	N9306 TOUCHDOWN DR
0.43	44574	VILLAGE OF HARRISON	MICHAEL SWIFT	SARA SWIFT	N9315 TOUCHDOWN DR		APPLETON	54915	N9315 TOUCHDOWN DR
0.46	44568	VILLAGE OF HARRISON	TODD M WOUFL	SHAUNA M SCHLEIHS	N9314 TOUCHDOWN DR		APPLETON	54915	N9314 TOUCHDOWN DR
0.52	44608	VILLAGE OF HARRISON	SCOTT GYOROG	KERI GYOROG	N9316 MULHOLLAND LN		APPLETON	54915	N9316 MULHOLLAND LN
0.43	44576	VILLAGE OF HARRISON	KASANDRA KRUEGER	KALLIE KRUEGER	N9323 TOUCHDOWN DR		APPLETON	54915	N9323 TOUCHDOWN DR
0.32	44606	VILLAGE OF HARRISON	ANTHONY RICCIARDI	MEGAN RICCIARDI	N9324 MULHOLLAND DR		APPLETON	54915	N9324 MULHOLLAND LN
0.43	44578	VILLAGE OF HARRISON	FERNANDO ALVAREZ	MIKAYLA ALVAREZ	N9331 TOUCHDOWN DR		APPLETON	54915	N9331 TOUCHDOWN DR
0.45	44564	VILLAGE OF HARRISON	JOSEPH P VANDEHY	SUE A VANDEHY	N9330 TOUCHDOWN DR		APPLETON	54915	N9330 TOUCHDOWN DR
0.33	44604	VILLAGE OF HARRISON	DEAN P VANDERHEIDEN	LINDA L VANDERHEIDEN	N9332 MULHOLLAND LN		APPLETON	54915	N9332 MULHOLLAND LN
0.43	44584	VILLAGE OF HARRISON	NICHOLAS JON KRUEGER	AMBER LYNN KRUEGER	N9355 TOUCHDOWN DR		APPLETON	54915	N9355 TOUCHDOWN DR
0.4	44596	VILLAGE OF HARRISON	MIGUEL BLANCO	SOL GIRALDO	N9364 MULHOLLAND LN		APPLETON	54915	N9364 MULHOLLAND LN
0.44	44554	VILLAGE OF HARRISON	MICHAEL TURNER	ERICA TURNER	N9370 TOUCHDOWN DR		APPLETON	54915	N9370 TOUCHDOWN DR
0.4	44594	VILLAGE OF HARRISON	NANCY L GORDLEY		345 SPRING PRAIRIE RD		WHITEFISH	59937	N9372 MULHOLLAND LN
0.44	44592	VILLAGE OF HARRISON	ZACHARY C COENEN	KELSEY L COENEN	N9380 MULHOLLAND LN		APPLETON	54915	N9380 MULHOLLAND LN
0.52	44552	VILLAGE OF HARRISON	PETER LORENZI	DENA LORENZI	N9378 TOUCHDOWN DR		APPLETON	54915	N9378 TOUCHDOWN DR
0.35	44612	VILLAGE OF HARRISON	BRIAN HECKERT	KRISTIN HECKERT	W5629 JONES WAY		APPLETON	54915	W5629 JONES WAY
0.69	44610	VILLAGE OF HARRISON	MATTHEW R TALBOT	SARAH M TALBOT	W5261 JONES WAY		APPLETON	54915	W5621 JONES WAY
0.33	44602	VILLAGE OF HARRISON	KATHERINE SCHMIDTKE		N9340 MULHOLLAND LN		APPLETON	54915	N9340 MULHOLLAND LN
0.35	44810	VILLAGE OF HARRISON	JOSEPH L JOHANEK	ROSELYN R JOHANEK	W5665 JONES WAY		APPLETON	54915	W5665 JONES WAY
0.345	43170	VILLAGE OF HARRISON	NICOLAS R SIERRA		N9196 DYLAN DR		APPLETON	54915	N9196 DYLAN DR
0.57	42996	VILLAGE OF HARRISON	VILLAGE OF HARRISON		W5298 HWY 114		MENASHA	54952	W6505 MANITOWOC RD
0.29	39702	VILLAGE OF HARRISON	JEAN NELSON		W6615 FIRELANE 6		MENASHA	54952	W6615 FIRELANE 6
0.3	44756	VILLAGE OF HARRISON	RYAN E BOWERS	TRUST	W5561 HOELZEL WAY		APPLETON	54915	W5561 HOELZEL WAY
0.33	44744	VILLAGE OF HARRISON	JEFFERY L EVERS	MAUREEN LYNN EVERS	N9384 DUSTY DR		APPLETON	54915	N9384 DUSTY DR
0.3	44726	VILLAGE OF HARRISON	ALINE S VANDOORN	WILLIAM VANDOORN IV	W5568 HOELZEL WAY		APPLETON	54915	W5568 HOELZEL WAY
0.31	44728	VILLAGE OF HARRISON	CHARLES L BUTLER JR		W5560 HOELZEL WAY		APPLETON	54915	W5560 HOELZEL WAY
0.31	44730	VILLAGE OF HARRISON	LEVENT BARIN		W5552 HOELZEL WAY		APPLETON	54915	W5552 HOELZEL WAY
0.34	44732	VILLAGE OF HARRISON	ASHLEY JOHNSON	ZACHARY JOHNSON	W5544 HOELZEL WAY		APPLETON	54911	W5544 HOELZEL WAY
0.28	44734	VILLAGE OF HARRISON	LAWRENCE F OWENS JR	CARMEN M GUST	W5536 HOELZEL WAY		APPLETON	54915	W5536 HOELZEL WAY
0.28	44736	VILLAGE OF HARRISON	GREGORY SCHREIBER	JANA SCHREIBER	W5528 HOELZEL WAY		APPLETON	54915	W5528 HOELZEL WAY
0.3	44738	VILLAGE OF HARRISON	MATTHEW E SCHAMPERS	KIMBERLY D SCHAMPERS	W5520 HOELZEL WAY		APPLETON	54915	W5520 HOELZEL WAY
0.51	44742	VILLAGE OF HARRISON	NANETTE L GERRITS		N9392 DUSTY DR		APPLETON	54915	N9392 DUSTY DR
0.28	44752	VILLAGE OF HARRISON	DONALD GILLETT	KIRA GILLETT	W5545 HOELZEL WAY		APPLETON	54915	W5545 HOELZEL WAY
0.28	44750	VILLAGE OF HARRISON	AMANDA RUYS		W5537 HOELZEL WAY		APPLETON	54915	W5537 HOELZEL WAY

0.28	44748	VILLAGE OF HARRISON	LUCAS G ZIMMER		W5529 HOELZEL WAY		APPLETON	54915	W5529 HOELZEL WAY
0.31	44746	VILLAGE OF HARRISON	SARAH GALLIGAN	RYAN GALLIGAN	W5521 HOELZEL WAY		APPLETON	54915	W5521 HOELZEL WAY
0.28	44754	VILLAGE OF HARRISON	MICHAEL ENGUITA	JILLIAN ENGUITA	W5553 HOELZEL WAY		APPLETON	54915	W5553 HOELZEL WAY
1.21	45600	VILLAGE OF HARRISON	GAIL A MAYER	JAMES G MAYER	W5460 MIELKE RD		MENASHA	54952	W5460 MIELKE RD
0.34	41834	VILLAGE OF HARRISON	EISSLER-HARDIN MARTHA L REV TR		13110 STERLING RIDGE DR, APT 402		OMAHA	68144	FIRELANE 3
0.35	44812	VILLAGE OF HARRISON	GREGORY KARRELS		W5657 JONES WAY		APPLETON	54915	W5657 JONES WAY
0.41	44808	VILLAGE OF HARRISON	NICOLE L WIESE		W5673 JONES WAY		APPLETON	54915	W5673 JONES WAY
0.54	44804	VILLAGE OF HARRISON	SCOTT HERRON	CHARITY RUDOLPH-HERRON	N9313 ROSELLA DR		APPLETON	54915	N9313 ROSELLA DR
0.38	44802	VILLAGE OF HARRISON	NATHAN P KILLEY	ERIN M DREES	N9321 ROSELLA DRIVE		APPLETON	54915	N9321 ROSELLA DR
0.34	44818	VILLAGE OF HARRISON	JASON LAMBIE	ASHLEY LAMBIE	N9328 ROSELLA DR		APPLETON	54915	N9328 ROSELLA DR
0.31	44816	VILLAGE OF HARRISON	ALEX STOEGER	LAUREN STOEGER	W5666 JONES WAY		APPLETON	54915	W5666 JONES WAY
0.36	44814	VILLAGE OF HARRISON	FRANCESCO PAOLO RUFFO	FEDERICA FEDELE	W5658 JONES WAY		APPLETON	54915	W5658 JONES WAY
0.31	44800	VILLAGE OF HARRISON	TRAVIS KORTH	JENNIFER KORTH	N9329 ROSELLA DRIVE		APPLETON	54915	N9329 ROSELLA DR
0.33	44820	VILLAGE OF HARRISON	MICHAEL FILTZ	IRMA FILTZ	N9336 ROSELLA DR		APPLETON	54915	N9336 ROSELLA DR
0.3	44798	VILLAGE OF HARRISON	JOHN M STEINHAEUER	AMANDA R STEINHAEUER	N9337 ROSELLA DR		APPLETON	54915	N9337 ROSELLA DR
0.33	44822	VILLAGE OF HARRISON	BETH M PORTMANN		N9344 ROSELLA DR		APPLETON	54915	N9344 ROSELLA DR
0.3	44796	VILLAGE OF HARRISON	THI KIM YEN NGUYEN		N9345 ROSELLA DR		APPLETON	54915	N9345 ROSELLA DR
0.33	44824	VILLAGE OF HARRISON	JORDAN DEVALK	ALYSSA DEVALK	N9352 ROSELLA DR		APPLETON	54915	N9352 ROSELLA DR
0.3	44794	VILLAGE OF HARRISON	JAIRO R MAZARIEGOS	AMANDA E MAZARIEGOS	N9353 ROSELLA DR		APPLETON	54915	N9353 ROSELLA DR
0.3	44792	VILLAGE OF HARRISON	JARED FARBER	KRISTIN KASPEREK	N9361 ROSELLA DR		APPLETON	54915	N9361 ROSELLA DR
0.33	44790	VILLAGE OF HARRISON	CHAD MICHALKIEWICZ	TRACIE L MICHALKIEWICZ	N9369 ROSELLA DR		APPLETON	54915	N9369 ROSELLA DR
0.33	44828	VILLAGE OF HARRISON	ROBERT FERRY	CAITLIN FERRY	N9368 ROSELLA DR		APPLETON	54915	N9368 ROSELLA DR
0.32	44788	VILLAGE OF HARRISON	RYAN J RANDESON	DONYA A RANDESON	N9377 ROSELLA DRIVE		APPLETON	54915	N9377 ROSELLA DR
0.33	44830	VILLAGE OF HARRISON	GREGORY M HACKBART	VALERIE L HACKBART	N9376 ROSELLA DR		APPLETON	54915	N9376 ROSELLA DR
0.31	45058	VILLAGE OF HARRISON	VILLAGE OF HARRISON		W5298 HWY 114		MENASHA	54952	SWEETGRASS TRL
1	44856	VILLAGE OF HARRISON	SAMUEL A SOUTHARD	ELISA K SOUTHARD	W5356 MIELKE RD		MENASHA	54952	W5356 MIELKE RD
1.21	44858	VILLAGE OF HARRISON	ZACHARY W SOUTHARD	ASHLEY M SOUTHARD	W5366 MIELKE RD		MENASHA	54952	W5366 MIELKE RD
1.21	46342	VILLAGE OF HARRISON	RYAN ALBRECHT	MEGAN ALBRECHT	92 HILLOCK CT		APPLETON	54914	MIELKE RD
0.3	44906	VILLAGE OF HARRISON	KELLY ERICKSON		W5994 ZACH ST		MENASHA	54952	W5994 ZACH ST
0.65	45478	VILLAGE OF HARRISON	HARWELL HOMES LLC		475 ALBERT WAY		APPLETON	54915	N8763 CONNOR CIR
0.3	44886	VILLAGE OF HARRISON	PETER W ELLENBECKER	JAMIE L DRAHELM	W5996 RYFORD ST		MENASHA	54952	W5996 RYFORD ST
0.23	44880	VILLAGE OF HARRISON	COLIN FRANK	MOLLY MANNICK	W6018 RYFORD ST		MENASHA	54952	W6018 RYFORD ST
0.23	44878	VILLAGE OF HARRISON	ANDREW HEETER	MEGAN HEETER	N6024 RYFORD ST		MENASHA	54952	W6024 RYFORD ST
0.23	44904	VILLAGE OF HARRISON	JEFFREY S BAKER	JULIE BAKER	W6002 ZACH ST		MENASHA	54952	W6002 ZACH ST
0.23	44902	VILLAGE OF HARRISON	RICHARD GRIESBACH	RAMONA GRIESBACH	W6008 ZACH ST		MENASHA	54952	W6008 ZACH ST
0.23	44900	VILLAGE OF HARRISON	ROBIN M ENGELKING		W6016 ZACH ST		MENASHA	54952	W6016 ZACH ST
0.23	44898	VILLAGE OF HARRISON	JONATHAN P TROST	KRISTA M TROST	W6022 ZACH ST		MENASHA	54952	W6022 ZACH ST
0.3	44888	VILLAGE OF HARRISON	STACY GREEN	TARA SMITH GREEN	W5995 RYFORD ST		MENASHA	54952	W5995 RYFORD ST
0.23	44890	VILLAGE OF HARRISON	LORI L KOLB		W6003 RYFORD ST		MENASHA	54952	W6003 RYFORD ST
0.23	44892	VILLAGE OF HARRISON	AARON M HAMNING	STEPHANIE P HAMNING	W6009 RYFORD ST		MENASHA	54952	W6009 RYFORD ST
0.23	44894	VILLAGE OF HARRISON	MICHELLE SANTALUCIA		W6017 RYFORD ST		MENASHA	54952	W6017 RYFORD ST
0.23	44896	VILLAGE OF HARRISON	LARRY D JONES	ANGELA M JONES	W6023 RYFORD ST		MENASHA	54952	W6023 RYFORD ST
0.23	44910	VILLAGE OF HARRISON	PAIGE VANHANDEL	VAN MASTERSON	W6015 ZACH ST.		MENASHA	54952	W6015 ZACH ST
0.23	44914	VILLAGE OF HARRISON	SCOTT RADKE	CHRISTINE SCHATD-RADKE	W6001 ZACH ST		MENASHA	54952	W6001 ZACH ST
0.46	38708	VILLAGE OF HARRISON	PAVONE ROBERT E REVOC TRUST		406 S. SEE GWUN AVENUE		MOUNT PROSPECT	60056	HARRISON RD
9.37	38714	VILLAGE OF HARRISON	HERNKE D A & J M REVOC TRUST		N6498 LAKESHORE DR		HILBERT	54129	HARRISON RD
0.67	45036	VILLAGE OF HARRISON	MAAS CURT J & VICKI G REVOCABLE TRUST		W6404 DOGWOOD LN		MENASHA	54952	N9007 SWEETGRASS TRL
0.28	45056	VILLAGE OF HARRISON	DAVID S GEURTS	LYNN A GEURTS	N9018 SWEETGRASS TRL		MENASHA	54952	N9018 SWEETGRASS TRL
0.28	45054	VILLAGE OF HARRISON	ROBERT F BOCK	RACHEL R BOCK	N9026 SWEETGRASS TRL		MENASHA	54952	N9026 SWEETGRASS TRL
0.31	45052	VILLAGE OF HARRISON	KEVIN KWASNY	ALYSSA KWASNY	N9032 SWEETGRASS TRL		MENASHA	54952	N9032 SWEETGRASS TRL
0.32	45050	VILLAGE OF HARRISON	JOSEPH HARDWICK	MEAGAN HARDWICK	N9040 SWEETGRASS TRL		MENASHA	54952	N9040 SWEETGRASS TRL
0.45	45038	VILLAGE OF HARRISON	RYAN POLCYN	BROOKE POLCYN	N9015 SWEETGRASS TRL		MENASHA	54952	N9015 SWEETGRASS TRL
0.57	45040	VILLAGE OF HARRISON	BRIAN MULHANEY	LAURA MULHANEY	N9027 SWEETGRASS TRL		MENASHA	54952	N9027 SWEETGRASS TRL
0.56	45042	VILLAGE OF HARRISON	KEVIN MEYER	MEGAN MEYER	N9041 SWEETGRASS TRL		MENASHA	54952	N9041 SWEETGRASS TRL
0.3	45048	VILLAGE OF HARRISON	KAMALJIT GILL		1200 PLANK RD		MENASHA	54952	W6378 WILDFLOWER TRL

0.3	45046	VILLAGE OF HARRISON	BRET A PEARSON	CATHERINE S PEARSON	W6386 WILDFLOWER TR	MENASHA	54952	W6386 WILDFLOWER TRL
0.53	45044	VILLAGE OF HARRISON	JEREMY LISOWE	CHRISTIE LISOWE	N9051 SWEETGRASS TRL	MENASHA	54952	N9051 SWEETGRASS TRL
0.63	45190	VILLAGE OF HARRISON	VILLAGE OF HARRISON		W5298 HWY 114	MENASHA	54952	N8806 NOE RD
0.53	45184	VILLAGE OF HARRISON	STEVEN JANSSEN	KATHY JANSSEN	N8822 NOE RD	MENASHA	54952	N8822 NOE RD
0.39	45168	VILLAGE OF HARRISON	JONATHAN CALDER	JESSICA CALDER	N8861 NOE RD	MENASHA	54952	N8861 NOE RD
0.74	45174	VILLAGE OF HARRISON	STEVEN R BURMEISTER	KATHRYN M BURMEISTER	N8880 NOE RD	MENASHA	54952	N8880 NOE RD
0.43	45160	VILLAGE OF HARRISON	SOLENE RIVERA GALARZA	ANTHONY ROSINA	N8823 NOE RD	MENASHA	54952	N8823 NOE RD
0.63	45158	VILLAGE OF HARRISON	JACK B KARCH	GRETCHYN KARCH	W5940 DELTA DR	MENASHA	54952	W5940 DELTA DR
0.43	45162	VILLAGE OF HARRISON	MYLEE XIONG	KONG M XIONG	N8831 NOE ROAD	MENASHA	54952	N8831 NOE RD
0.65	45156	VILLAGE OF HARRISON	JESSICA L TITEL	MATTHEW A TITEL	W5954 DELTA DR	MENASHA	54952	W5954 DELTA DR
0.52	45164	VILLAGE OF HARRISON	BENZ BRADLEY E & PENNY L LIVING TRUST		N8841 NOE RD	MENASHA	54952	N8841 NOE RD
0.63	45154	VILLAGE OF HARRISON	MATT C LUANGLA	MY SEE LUANGLA	W5962 DELTA DR	MENASHA	54952	W5962 DELTA DR
0.7	45166	VILLAGE OF HARRISON	MATTHEW E ERSTAD	KATHERINE L ERSTAD	N8851 NOE RD	MENASHA	54952	N8851 NOE RD
0.39	45170	VILLAGE OF HARRISON	BRANDON C RILEY	JENNIFER M RILEY	W5935 EDGEWOOD DR	MENASHA	54952	W5935 EDGEWOOD DR
0.72	45152	VILLAGE OF HARRISON	MICHAEL J & SARA H SWIFT REVOC TRUST		N9315 TOUCHDOWN DR	APPLETON	54915	W5955 EDGEWOOD DR
0.53	45182	VILLAGE OF HARRISON	HOLLY MARIE ERTMER	BRIAN JOSEPH ERTMER	N8830 NOE RD	MENASHA	54952	N8830 NOE RD
0.53	45180	VILLAGE OF HARRISON	RANDALL KEITH REED	AMANDA ANNE REED	N8840 NOE ROAD	MENASHA	54952	N8840 NOE RD
0.53	45178	VILLAGE OF HARRISON	CATHERINE A FRONEK		N8850 NOE RD	MENASHA	54952	N8850 NOE RD
0.53	45176	VILLAGE OF HARRISON	GEORGE T BROWN	TRACI L BROWN	N8860 NOE ROAD	MENASHA	54952	N8860 NOE RD
0.8	45172	VILLAGE OF HARRISON	JODIE SCHMIDT	NEAL SCHMIDT	8223 CO RD D	KAUKAUNA	54130	N8892 NOE RD
0.93	45144	VILLAGE OF HARRISON	JOSH MARQUARDT	SARA MARQUARDT	W5943 DELTA DR	MENASHA	54952	W5943 DELTA DR
2	45136	VILLAGE OF HARRISON	JEFFREY J ROOYAKKERS	ERIN E ROOYAKKERS	N8806 CONNOR CIR	MENASHA	54952	N8806 CONNOR CIR
0.61	45146	VILLAGE OF HARRISON	ADAM NACKERS	MANDY NACKERS	N8935 SPRING VALLEY RD	MENASHA	54952	W5951 DELTA DR
0.63	45148	VILLAGE OF HARRISON	DAVID M & LINDA M EBBEN LIVING TRUST		W5959 DELTA DR	MENASHA	54952	W5959 DELTA DR
0.64	45150	VILLAGE OF HARRISON	MATHEW M VANZEELAND	OLIVIA L VANZEELAND	W5967 DELTA DR	MENASHA	54952	W5967 DELTA DR
1.32	45132	VILLAGE OF HARRISON	PAUL E BENEDICT	HEATHER N BENEDICT	W5983 HIGHLAND CT	MENASHA	54952	W5983 HIGHLAND CT
0.006	45192	VILLAGE OF HARRISON	RUBY L KAUFMAN		RR1 BOX 176A	MENASHA	54952	
0.48	45140	VILLAGE OF HARRISON	BRETT B BIRNSCHEIN	RACHAEL L BIRNSCHEIN	W5925 DELTA DR	MENASHA	54952	W5925 DELTA DR
0.74	45142	VILLAGE OF HARRISON	CHRISTOPHER NACKERS	AMBER NACKERS	100 WOODLAND CT	KAUKAUNA	54130	W5933 DELTA DR
0.85	45186	VILLAGE OF HARRISON	VILLAGE OF HARRISON		W5298 HWY 114	MENASHA	54952	W5979 WOODLAND RD
0.96	45124	VILLAGE OF HARRISON	BRAD R LEITNER	CHARLCIE CK LEITNER	W5954 EDGEWOOD DR	MENASHA	54952	W5954 EDGEWOOD DR
1.48	45188	VILLAGE OF HARRISON	VILLAGE OF HARRISON		W5298 HWY 114	MENASHA	54952	W5930 EDGEWOOD DR
0.7	45122	VILLAGE OF HARRISON	BERGWALL GEOFFREY & ERIN REVOCABLE TRUST		W5946 EDGEWOOD DR	MENASHA	54952	W5946 EDGEWOOD DR
1.76	45128	VILLAGE OF HARRISON	EMILY A KOSSEL	JASON D KOSSEL	N9009 SPRING VALLEY ROAD	MENASHA	54952	W5988 HIGHLAND CT
0.52	45120	VILLAGE OF HARRISON	SHEKHAR K ADHIKARI	DEVI ADHIKARI	W6523 AUSTIN DR	APPLETON	54915	N8893 NOE RD
0.45	45118	VILLAGE OF HARRISON	TODD MEISNER	TRISHA MEISNER	W5933 WOODLAND RD	MENASHA	54952	W5933 WOODLAND RD
0.42	45116	VILLAGE OF HARRISON	DAWN PETERSON	PAUL PETERSON	N9132 BRENDA DR	APPLETON	54915	W5943 WOODLAND RD
0.51	45114	VILLAGE OF HARRISON	NATHANIEL R LEONHARD	LAUREN R LEONHARD	W5953 WOODLAND RD	MENASHA	54952	W5953 WOODLAND RD
0.55	45112	VILLAGE OF HARRISON	RIC BLOUGH	DANNELL BLOUGH	W5963 WOODLAND RD	MENASHA	54952	W5963 WOODLAND RD
0.57	45110	VILLAGE OF HARRISON	RYAN OCONNELL	RENEE OCONNELL	W5973 WOODLAND RD	MENASHA	54952	W5973 WOODLAND RD
0.62	45108	VILLAGE OF HARRISON	MICHAEL EIMMERMAN		W5985 WOODLAND RD	MENASHA	54952	W5985 WOODLAND RD
0.55	45106	VILLAGE OF HARRISON	BADGER CAPITAL HOLDINGS I LLC		210 N. MAIN STREET, STE. 100	OSHKOSH	54901	W5995 WOODLAND RD
0.48	45372	VILLAGE OF HARRISON	RICHARD JOSEPH BENNETT III	STEPHANIE RENEE BENNETT	N9328 DUSTY DR	APPLETON	54915	N9328 DUSTY DR
12.46	38988	VILLAGE OF HARRISON	PREMIER HARRISON LLC	PREMIER HARRISON II LLC	3120 GATEWAY ROAD	BROOKFIELD	53045	FRIENDSHIP DR
10.06	39024	VILLAGE OF HARRISON	PREMIER HARRISON LLC	PREMIER HARRISON II LLC	3120 GATEWAY ROAD	BROOKFIELD	53045	HIGHLINE RD
1.46	33694	VILLAGE OF HARRISON	DANIEL L HEIN	CATHY A MITCHLER HEIN	W5845 COUNTY RD KK	APPLETON	54915	COUNTY KK
52.6	44056	VILLAGE OF HARRISON	DRISCOLL PROPERTIES LLC		1358 YORKSHIRE COURT	NEENAH	54956	N9179 N COOP RD
13.23	33640	VILLAGE OF HARRISON	ASTERION PLACE LLC		1256 CENTENNIAL CENTRE BLVD	HOBART	54155	W6424 SONNY DR
0.28	45326	VILLAGE OF HARRISON	JOSEPH J STEPHANI	DANIELLE L STEPHANI	W5562 SCHREIBER LANE	APPLETON	54915	W5562 SCHREIBER LN
0.42	45364	VILLAGE OF HARRISON	PATRICK ARENT	LISA ARENT	N9305 DUSTY DR	APPLETON	54915	N9305 DUSTY DR
0.3	45346	VILLAGE OF HARRISON	SAMUEL A KIRKLAND	CHERYL L KIRKLAND	N9357 DUSTY DR	APPLETON	54915	N9357 DUSTY DR
0.28	45324	VILLAGE OF HARRISON	GINA MULLEN	MATTHEW MULLEN	W5554 SCHREIBER LN	APPLETON	54915	W5554 SCHREIBER LN
0.4	45314	VILLAGE OF HARRISON	TRISHA LIEBZEIT	SKYLAR LIEBZEIT	N9376 DUSTY DR	APPLETON	54915	N9376 DUSTY DR
0.3	45352	VILLAGE OF HARRISON	GREGORY D MICHALSKI		N9345 DUSTY DR	APPLETON	54915	N9345 DUSTY DR

0.28	45322	VILLAGE OF HARRISON	MARK W REICH	STEPHANIE A REICH	W5546 SCHREIBER LN		APPLETON	54915	W5546 SCHREIBER LN
0.28	45320	VILLAGE OF HARRISON	ADAM E KRUEGER	RANDI L KRUEGER	W5538 SCHREIBER LN		APPLETON	54915	W5538 SCHREIBER LN
0.28	45318	VILLAGE OF HARRISON	DARIN L CHRISTIE	DEBRA L CHRISTIE	W5530 SCHREIBER LANE		APPLETON	54915	W5530 SCHREIBER LN
0.31	45316	VILLAGE OF HARRISON	JAMES PATRICK PETERSON	CHELSIE ANN PETERSON	W5522 SCHREIBER LN		APPLETON	54915	W5522 SCHREIBER LN
0.35	45344	VILLAGE OF HARRISON	MATTHEW BEHRENS	MATTHEW BEHRENS	N9361 DUSTY DRIVE		APPLETON	54915	N9361 DUSTY DR
0.34	45340	VILLAGE OF HARRISON	GREG OLSON	ERIN REISNER	W5531 SCHREIBER LANE		APPLETON	54915	W5531 SCHREIBER LN
0.34	45338	VILLAGE OF HARRISON	MATTHEW BYRNE	MARGARET BYRNE	W5539 SCHREIBER LN		APPLETON	54915	W5539 SCHREIBER LN
0.35	45336	VILLAGE OF HARRISON	WADE F CAFLISCH	GENNA T CAFLISCH	W5547 SCHREIBER LANE		APPLETON	54915	W5547 SCHREIBER LN
0.36	45334	VILLAGE OF HARRISON	AARON BRAUN	BRITTANY GOODRICH BRAUN	W5551 SCHREIBER LN		APPLETON	54915	W5551 SCHREIBER LN
0.59	45332	VILLAGE OF HARRISON	AMANDA NEUMEIER KIST	BRIAN KIST	W5557 SCHREIBER LN		APPLETON	54915	W5557 SCHREIBER LN
0.3	45348	VILLAGE OF HARRISON	ANDREW R MASCOLA	ALLISON D MASCOLA	N9353 DUSTY DR		APPLETON	54915	N9353 DUSTY DR
0.3	45350	VILLAGE OF HARRISON	CHRISTOPHER HEAVER	KRISTEN HEAVER	N9349 DUSTY DRIVE		APPLETON	54915	N9349 DUSTY DR
0.37	45342	VILLAGE OF HARRISON	JULIAN FRANZEN	AMBER FRANZEN	W5523 SCHREIBER LANE		APPLETON	54915	W5523 SCHREIBER LN
0.37	45362	VILLAGE OF HARRISON	ZIMMERMANN ELIJAH & DARIANN JOINT REV LIV TRUST		N9313 DUSTY DR		APPLETON	54915	N9313 DUSTY DR
0.37	45360	VILLAGE OF HARRISON	JAMES P FARRELL	KARI A FARRELL	N9321 DUSTY DR		APPLETON	54915	N9321 DUSTY DR
0.48	45358	VILLAGE OF HARRISON	SCOTT R SCHEWE	TRUST	N9329 DUSTY DR		APPLETON	54915	N9329 DUSTY DR
0.78	45356	VILLAGE OF HARRISON	AARON JAMES SHAW	TRACI LYNN SHAW	N9335 DUSTY DR		APPLETON	54915	N9335 DUSTY DR
0.41	45368	VILLAGE OF HARRISON	MARK A WITTAK	NIKOLE T WITTAK	N9312 DUSTY DR		APPLETON	54915	N9312 DUSTY DR
0.41	45370	VILLAGE OF HARRISON	CHRISTOPHER POMMERENING	PAMELA POMMERENING	N9320 DUSTY DR		APPLETON	54915	N9320 DUSTY DR
0.35	45376	VILLAGE OF HARRISON	CALE KASTEN	KATHERINE KASTEN	N9338 DUSTY DRIVE		APPLETON	54915	N9338 DUSTY DR
0.35	45374	VILLAGE OF HARRISON	NATHANIEL C EARL	DAKOTA J VANDEBERG	N9334 DUSTY DR		APPLETON	54915	N9334 DUSTY DR
0.4	45378	VILLAGE OF HARRISON	CYPRESS HOMES INC		1230 W COLLEGE AVE, SUITE D		APPLETON	54914	N9342 DUSTY DR
0.7	45380	VILLAGE OF HARRISON	PATRICIA KRYCH		N9348 DUSTY DR		APPLETON	54915	N9348 DUSTY DR
0.52	45382	VILLAGE OF HARRISON	CYPRESS HOMES INC		1230 W COLLEGE AVE, SUITE D		APPLETON	54914	N9354 DUSTY DR
0.32	45386	VILLAGE OF HARRISON	STEVEN R PAULS	MICHELE L PAULS	N9366 DUSTY DR		APPLETON	54915	N9366 DUSTY DR
0.29	45424	VILLAGE OF HARRISON	MICHAEL SCHULDES	SUSAN SCHULDES	W6353 KIMBERLY TR		HARRISON	54952	W6353 KIMBERLY TRL
0.28	45422	VILLAGE OF HARRISON	EL SOUTHTOWNE LLC		715 SOUTH RAILROAD STREET		KIMBERLY	54136	N9016 SOUTHTOWNE DR
0.26	45438	VILLAGE OF HARRISON	EL SOUTHTOWNE LLC		715 SOUTH RAILROAD STREET		KIMBERLY	54136	N9053 SOUTHTOWNE DR
0.21	45440	VILLAGE OF HARRISON	EL SOUTHTOWNE LLC		715 SOUTH RAILROAD STREET		KIMBERLY	54136	N9055 SOUTHTOWNE DR
0.17	45442	VILLAGE OF HARRISON	DANIEL J ZULEGER	GRACE R ZULEGER	N9063 SOUTHTOWNE DR		MENASHA	54952	N9063 SOUTHTOWNE DR
0.17	45444	VILLAGE OF HARRISON	EL SOUTHTOWNE LLC		715 SOUTH RAILROAD STREET		KIMBERLY	54136	N9065 SOUTHTOWNE DR
0.17	45446	VILLAGE OF HARRISON	BECKY GOLAND REVOCABLE TRUST		N9073 SOUTHTOWNE DR		MENASHA	54952	N9073 SOUTHTOWNE DR
0.16	45450	VILLAGE OF HARRISON	EL SOUTHTOWNE LLC		715 SOUTH RAILROAD STREET		KIMBERLY	54136	N9083 SOUTHTOWNE DR
0.15	45452	VILLAGE OF HARRISON	STEPHEN D & BETH A HENG LIVING TRUST		N9085 SOUTHTOWNE DR		MENASHA	54952	N9085 SOUTHTOWNE DR
0.15	45454	VILLAGE OF HARRISON	EL SOUTHTOWNE LLC		715 SOUTH RAILROAD STREET		KIMBERLY	54136	N9093 SOUTHTOWNE DR
0.19	45456	VILLAGE OF HARRISON	EL SOUTHTOWNE LLC		715 SOUTH RAILROAD STREET		KIMBERLY	54136	N9095 SOUTHTOWNE DR
0.18	45404	VILLAGE OF HARRISON	STEVEN A HENCK	TERI L HABLE	N9072 SOUTHTOWNE DR		MENASHA	54952	N9072 SOUTHTOWNE DR
0.18	45402	VILLAGE OF HARRISON	THOMAS R STRAUCH	CARLA A STRAUCH	82929 THOMPSON LANE		FERNANDINA BEACH	32034	N9074 SOUTHTOWNE DR
0.28	45414	VILLAGE OF HARRISON	DEREK HIROSKY	TAMRA HIROSKY	9262 KUMBIER RD		WINNECONNE	54986	N9046 SOUTHTOWNE DR
0.17	45412	VILLAGE OF HARRISON	MARK J BUSS		1835 E EDGEWOOD DR	STE 105210	APPLETON	54913	N9052 SOUTHTOWNE DR
0.17	45410	VILLAGE OF HARRISON	LORI R MACKEY REV LIVING TRUST AGRMNT		N9054 SOUTHTOWNE DR		MENASHA	54952	N9054 SOUTHTOWNE DR
0.28	45416	VILLAGE OF HARRISON	KM CONSTRUCTION		N9041 SWEETGRASS TRL		MENASHA	54952	N9038 SOUTHTOWNE DR
0.19	45400	VILLAGE OF HARRISON	EL SOUTHTOWNE LLC		715 SOUTH RAILROAD STREET		KIMBERLY	54136	N9082 SOUTHTOWNE DR
0.2	45398	VILLAGE OF HARRISON	EL SOUTHTOWNE LLC		715 SOUTH RAILROAD STREET		KIMBERLY	54136	N9084 SOUTHTOWNE DR
0.28	45430	VILLAGE OF HARRISON	JEFF NUECHTERLEIN	AMANDA NUECHTERLEIN	N9019 SOUTHTOWNE DR		MENASHA	54952	N9019 SOUTHTOWNE DR
0.28	45432	VILLAGE OF HARRISON	KOREY N PETERSON	LEAH R PETERSON	617 E BREWSTER ST		APPLETON	54911	N9027 SOUTHTOWNE DR
0.28	45434	VILLAGE OF HARRISON	PFILE HOMES INC		W6977 FIRE LANE 3		MENASHA	54952	N9033 SOUTHTOWNE DR
0.31	45436	VILLAGE OF HARRISON	DAVINDER SINGH	MANDEEP KAUR	3709 S BOYD ST		APPLETON	54915	N9041 SOUTHTOWNE DR
0.22	45458	VILLAGE OF HARRISON	VILLAGE OF HARRISON		W5298 HWY 114		MENASHA	54952	N9017 SOUTHTOWNE DR
0.28	45418	VILLAGE OF HARRISON	BRIAN WARNER CONSTRUCTION LLC		W5922 HEARTHSTONE DR		APPLETON	54915	N9030 SOUTHTOWNE DR
0.55	45428	VILLAGE OF HARRISON	DANIEL P HIGGINS	CAITLIN M HIGGINS	N9013 SOUTHTOWNE DR		MENASHA	54952	N9013 SOUTHTOWNE DR
3.17	45460	VILLAGE OF HARRISON	MELISSA WALLACE		W4822 SCHMIDT RD		KAUKAUNA	54130	W4822 SCHMIDT RD
0.87	45518	VILLAGE OF HARRISON	HARWELL HOMES LLC		475 ALBERT WAY		APPLETON	54915	N8744 CONNOR CIR
0.29	45490	VILLAGE OF HARRISON	SHELLY KUKREJA	SAURABH KUKREJA	N8739 CONNOR CIR		MENASHA	54952	N8739 CONNOR CIR

0.36	45516	VILLAGE OF HARRISON	JONATHON J NELSON	JESSICA N NELSON	N8738 CONNOR CIR	HARRISON	54952	N8738 CONNOR CIR
0.35	45514	VILLAGE OF HARRISON	LYZETTE L MAROSZEK	BRIAN J MAROSZEK	N8732 CONNOR CIRCLE	MENASHA	54952	N8732 CONNOR CIR
0.34	45512	VILLAGE OF HARRISON	JENNY GITTER	JOSHUA GITTER	N8726 CONNOR CIR	MENASHA	54952	N8726 CONNOR CIR
0.34	45510	VILLAGE OF HARRISON	KENNETH A HAAS	TRUST	N8722 CONNOR CIR	MENASHA	54952	N8722 CONNOR CIR
0.41	45508	VILLAGE OF HARRISON	JARED J KLINGER	CARA J KLINGER	N8718 CONNOR CIR	MENASHA	54952	N8718 CONNOR CIR
0.4	45476	VILLAGE OF HARRISON	FRANK V NIZZIA	ANDREA CHRISTENSEN	848 RAINE ST	MENASHA	54952	N8767 CONNOR CIR
0.3	45474	VILLAGE OF HARRISON	EMILY JONES		N8771 CONNOR CIR	MENASHA	54952	N8771 CONNOR CIR
0.37	45488	VILLAGE OF HARRISON	MISSION OF MOUNT CALVARY EVANGELICAL LUTHERAN CHURCH OF MENASHA		N8728 COOP RD	MENASHA	54952	N8770 CONNOR CIR
0.26	45492	VILLAGE OF HARRISON	KYLE R ZAK	ELIZABETH A ZAK	N8733 CONNOR CIR	MENASHA	54952	N8733 CONNOR CIR
0.26	45486	VILLAGE OF HARRISON	HARWELL HOMES LLC		475 ALBERT WAY	APPLETON	54915	N8774 CONNOR CIR
0.26	45494	VILLAGE OF HARRISON	BRUCE DANIEL LECKEY JR	ANNE ELIZABETH PRATER	N8727 CONNOR CIR	MENASHA	54952	N8727 CONNOR CIR
0.26	45484	VILLAGE OF HARRISON	BRIAN WARNER CONSTRUCTION LLC		W5922 HEARTHSTONE DR	APPLETON	54915	N8778 CONNOR CIR
0.26	45496	VILLAGE OF HARRISON	JASON LONE	NENA LONE	N8723 CONNOR CIRCLE	MENASHA	54952	N8723 CONNOR CIR
0.26	45482	VILLAGE OF HARRISON	ANGELA VANDERZANDEN		N8782 CONNOR CIR	MENASHA	54952	N8782 CONNOR CIR
0.32	45498	VILLAGE OF HARRISON	BRYAN D STEINER	AMY J STEINER	N8719 CONNOR CIR	MENASHA	54952	N8719 CONNOR CIR
0.32	45480	VILLAGE OF HARRISON	KALLIE KRUEGER		N8786 CONNOR CIRCLE	MENASHA	54952	N8786 CONNOR CIR
0.24	45504	VILLAGE OF HARRISON	JASON H SCHEBERL	CORI L SCHEBERL	W5964 RYFORD ST	MENASHA	54952	W5964 RYFORD ST
0.24	45502	VILLAGE OF HARRISON	JOSEPH PETER BLUM	ALYSA RAY BLUM	W5972 RYFORD ST	MENASHA	54952	W5972 RYFORD ST
0.3	45500	VILLAGE OF HARRISON	BENJAMIN T FOUTS	PATRICIA K COLLINS-FOUTS	W5982 RYFORD ST	MENASHA	54952	W5982 RYFORD ST
1.1	45134	VILLAGE OF HARRISON	UECKER PROPERTIES LLC		W4954 HIGHLINE RD	KAUKAUNA	54130	N8809 CONNOR CIR
1.4	45528	VILLAGE OF HARRISON	ANDREW R & LAUREN E UECKER LIVING TRUST		N8812 CONNOR CIRCLE	MENASHA	54952	N8812 CONNOR CIR
0.33	45546	VILLAGE OF HARRISON	ALAN J LAMERS		N9062 SOUTHTOWNE DR	MENASHA	54952	HARRISVILLE CT
17.51	43288	VILLAGE OF HARRISON	MIRRAGIO LLC		1256 CENTENNIAL CENTRE BLVD	HOBART	54155	W6651 MIDWAY RD
0.31	45776	VILLAGE OF HARRISON	LEXINGTON HOMES INC		1256 CENTENNIAL CENTRE BLVD	ONEIDA	54155	W6633 ETHAN DR
13.62	45588	VILLAGE OF HARRISON	VILLAGE OF HARRISON		W5298 HWY 114	MENASHA	54952	
1.47	42188	VILLAGE OF HARRISON	ATLAS DEVELOPMENTS & CONSTRUCTION LLC		N8641 WINDING TRAIL DR	MENASHA	54952	W5941 OLD HIGHWAY RD
1.14	45590	VILLAGE OF HARRISON	ATLAS DEVELOPMENTS & CONSTRUCTION LLC		N8641 WINDING TRAIL DR	MENASHA	54952	W5925 OLD HIGHWAY RD
1.21	46094	VILLAGE OF HARRISON	BRIAN P SCHAEFER	KARA L SCHAEFER	W5448 MIELKE RD	MENASHA	54952	MIELKE RD
0.24	45774	VILLAGE OF HARRISON	LEXINGTON HOMES INC		1256 CENTENNIAL CENTRE BLVD	ONEIDA	54155	W6623 ETHAN DR
0.24	45772	VILLAGE OF HARRISON	LEXINGTON HOMES INC		1256 CENTENNIAL CENTRE BLVD	ONEIDA	54155	W6617 ETHAN DR
0.24	45770	VILLAGE OF HARRISON	LEXINGTON HOMES INC		1256 CENTENNIAL CENTRE BLVD	ONEIDA	54155	W6611 ETHAN DR
0.24	45768	VILLAGE OF HARRISON	LEXINGTON HOMES INC		1256 CENTENNIAL CENTRE BLVD	ONEIDA	54155	W6605 ETHAN DR
0.33	45762	VILLAGE OF HARRISON	JAMES L LAWLOR	ELLEN M LAWLOR	W6581 ETHAN DR	APPLETON	54915	W6581 ETHAN DR
0.003	45824	VILLAGE OF HARRISON	LEXINGTON HOMES INC		1256 CENTENNIAL CENTRE BLVD	ONEIDA	54155	
0.24	45742	VILLAGE OF HARRISON	LEXINGTON HOMES INC		1256 CENTENNIAL CENTRE BLVD	ONEIDA	54155	N9248 CONSTELLATION DR
0.24	45740	VILLAGE OF HARRISON	LEXINGTON HOMES INC		1256 CENTENNIAL CENTRE BLVD	ONEIDA	54155	N9254 CONSTELLATION DR
0.27	45738	VILLAGE OF HARRISON	LEXINGTON HOMES INC		1256 CENTENNIAL CENTRE BLVD	ONEIDA	54155	N9260 CONSTELLATION DR
0.27	45736	VILLAGE OF HARRISON	LEXINGTON HOMES INC		1256 CENTENNIAL CENTRE BLVD	ONEIDA	54155	N9266 CONSTELLATION DR
0.24	45734	VILLAGE OF HARRISON	LEXINGTON HOMES INC		1256 CENTENNIAL CENTRE BLVD	ONEIDA	54155	N9272 CONSTELLATION DR
0.24	45732	VILLAGE OF HARRISON	LEXINGTON HOMES INC		1256 CENTENNIAL CENTRE BLVD	ONEIDA	54155	N9278 CONSTELLATION DR
0.24	45730	VILLAGE OF HARRISON	LEXINGTON HOMES INC		1256 CENTENNIAL CENTRE BLVD	ONEIDA	54155	N9284 CONSTELLATION DR
0.24	45820	VILLAGE OF HARRISON	LEXINGTON HOMES INC		1256 CENTENNIAL CENTRE BLVD	ONEIDA	54155	N9285 CONSTELLATION DR
0.3	45822	VILLAGE OF HARRISON	LEXINGTON HOMES INC		1256 CENTENNIAL CENTRE BLVD	ONEIDA	54155	N9293 CONSTELLATION DR
0.3	45728	VILLAGE OF HARRISON	LEXINGTON HOMES INC		1256 CENTENNIAL CENTRE BLVD	ONEIDA	54155	N9292 CONSTELLATION DR
0.24	45818	VILLAGE OF HARRISON	LEXINGTON HOMES INC		1256 CENTENNIAL CENTRE BLVD	ONEIDA	54155	N9279 CONSTELLATION DR
0.27	45808	VILLAGE OF HARRISON	LEXINGTON HOMES INC		1256 CENTENNIAL CENTRE BLVD	ONEIDA	54155	N9249 CONSTELLATION DR
0.24	45810	VILLAGE OF HARRISON	LEXINGTON HOMES INC		1256 CENTENNIAL CENTRE BLVD	ONEIDA	54155	N9255 CONSTELLATION DR
0.24	45812	VILLAGE OF HARRISON	LEXINGTON HOMES INC		1256 CENTENNIAL CENTRE BLVD	ONEIDA	54155	N9261 CONSTELLATION DR
0.24	45814	VILLAGE OF HARRISON	LEXINGTON HOMES INC		1256 CENTENNIAL CENTRE BLVD	ONEIDA	54155	N9267 CONSTELLATION DR
0.24	45816	VILLAGE OF HARRISON	LEXINGTON HOMES INC		1256 CENTENNIAL CENTRE BLVD	ONEIDA	54155	N9273 CONSTELLATION DR
0.27	45760	VILLAGE OF HARRISON	SEAN STEINACKER	CINDY STEINACKER	W6573 ETHAN DR	APPLETON	54915	W6573 ETHAN DR
0.25	45754	VILLAGE OF HARRISON	MICHAEL H & PATRICIA L MOWRY REV TRUST		W6555 ETHAN DR	APPLETON	54915	W6555 ETHAN DR

0.22	45896	VILLAGE OF HARRISON	LEXINGTON HOMES INC		1256 CENTENNIAL CENTRE BLVD	ONEIDA	54155	W6555 E STEAMBOAT LN
0.21	45898	VILLAGE OF HARRISON	LEXINGTON HOMES INC		1256 CENTENNIAL CENTRE BLVD	ONEIDA	54155	W6559 E STEAMBOAT LN
0.21	45900	VILLAGE OF HARRISON	LEXINGTON HOMES INC		1256 CENTENNIAL CENTRE BLVD	ONEIDA	54155	W6565 E STEAMBOAT LN
0.21	45902	VILLAGE OF HARRISON	LEXINGTON HOMES INC		1256 CENTENNIAL CENTRE BLVD	ONEIDA	54155	W6569 E STEAMBOAT LN
0.27	45904	VILLAGE OF HARRISON	LEXINGTON HOMES INC		1256 CENTENNIAL CENTRE BLVD	ONEIDA	54155	W6575 E STEAMBOAT LN
3.03	46004	VILLAGE OF HARRISON	LEXINGTON HOMES INC		1256 CENTENNIAL CENTRE BLVD	ONEIDA	54155	LAKE PARK RD
0.59	45938	VILLAGE OF HARRISON	LEXINGTON HOMES INC		1256 CENTENNIAL CENTRE BLVD	ONEIDA	54155	N9305 GEMSTONE CT
0.6	45936	VILLAGE OF HARRISON	LEXINGTON HOMES INC		1256 CENTENNIAL CENTRE BLVD	ONEIDA	54155	N9308 GEMSTONE CT
0.28	33400	VILLAGE OF HARRISON	BRIAN ANTHONY KOLLATZ	EMILY ANN MENGERT	W5718 HOELZEL WAY	APPLETON	54915	W5718 HOELZEL WAY
8.08	45874	VILLAGE OF HARRISON	NOVELLA II LLC		1256 CENTENNIAL CENTRE BLVD	HOBART	54155	LAKE PARK RD
4.15	46188	VILLAGE OF HARRISON	VANS REALTY & CONSTRUCTION OF APPLETON INC		2525 S ONEIDA ST	APPLETON	54915	MIDWAY RD
17.53	46190	VILLAGE OF HARRISON	DEWITT DEVELOPMENT LLC		3405 COMMERCE CT	APPLETON	54911	
0.42	46250	VILLAGE OF HARRISON	JORDAN MASHLAN		W5591 GREY DR	APPLETON	54915	W5591 GREY DR
0.35	46248	VILLAGE OF HARRISON	JEFFREY STRACHOTA	ABBEY STRACHOTA	W5583 GREY DR	APPLETON	54915	W5583 GREY DR
0.35	46246	VILLAGE OF HARRISON	JAMES A BAHLMAN	MARGARET C BAHLMAN	W5577 GREY DR	APPLETON	54915	W5577 GREY DR
0.35	46244	VILLAGE OF HARRISON	PAUL A MORRIS	TERESE MEVERDEN MORRIS	W5565 GREY DRIVE	APPLETON	54915	W5565 GREY DR
0.35	46242	VILLAGE OF HARRISON	MIDWEST DESIGN HOMES INC		N2335 W FRONTAGE RD	KAUKAUNA	54130	W5551 GREY DR
0.36	46240	VILLAGE OF HARRISON	CAITLIN BONIS	CHAD BONIS	W5547 GREY DR	APPLETON	54915	W5547 GREY DR
0.64	46338	VILLAGE OF HARRISON	DERCKS DEWITT II LLC		3405 COMMERCE CT STE C	APPLETON	54911	
0.75	46236	VILLAGE OF HARRISON	MICHAEL DUFFY		1415 SW 44TH ST	CAPE CORAL	33914	N9220 CASSANDRA WAY
3.57	46238	VILLAGE OF HARRISON	BENJAMIN DUFFY	KRISTIN DUFFY	W5529 GREY DR	APPLETON	54915	W5529 GREY DR
0.39	46320	VILLAGE OF HARRISON	VANS REALTY & CONSTRUCTION OF APPLETON INC		2525 S ONEIDA ST	APPLETON	54915	W5598 GREY DR
0.36	46288	VILLAGE OF HARRISON	NATHAN T HEPPE	STEPHANIE HEPPE	N9223 LAURA ST	APPLETON	54915	N9223 LAURA ST
0.31	46254	VILLAGE OF HARRISON	JUSTIS SUTHEIMER	NATHAN SUTHEIMER	N9221 CASSANDRA WAY	APPLETON	54915	N9221 CASSANDRA WAY
0.43	46234	VILLAGE OF HARRISON	RICKY E OLIG	LAWRENCE C TSE	N9228 CASSANDRA WAY	APPLETON	54915	N9228 CASSANDRA WAY
0.37	46322	VILLAGE OF HARRISON	RYAN VLIES	MACIE PETERS	N9233 TOUCHDOWN DR	APPLETON	54915	N9233 TOUCHDOWN DR
0.34	46316	VILLAGE OF HARRISON	SCHMIDT BROS CUSTOM HOMES INC		4845 CANASBACK CIR	APPLETON	54913	N9232 TOUCHDOWN DR
0.34	46290	VILLAGE OF HARRISON	UECKER PROPERTIES LLC		W4954 HIGHLAND RD	KAUKAUNA	54130	N9231 LAURA ST
0.32	46284	VILLAGE OF HARRISON	PFILE HOMES INC		N9230 LAURA ST	APPLETON	54915	N9230 LAURA ST
0.32	46256	VILLAGE OF HARRISON	HENNESSEY HOMES INC		9365 CENTER RD	NEENAH	54956	N9229 CASSANDRA WAY
0.43	46232	VILLAGE OF HARRISON	PARKER DEWITT		N9236 CASSANDRA WAY	APPLETON	54915	N9236 CASSANDRA WAY
0.37	46324	VILLAGE OF HARRISON	SCHMIDT BROS CUSTOM HOMES INC		4845 CANVASBACK	APPLETON	54913	N9241 TOUCHDOWN DR
0.34	46314	VILLAGE OF HARRISON	JASON SELIG HOMES LLC		W5750 JOCHMANN DR	APPLETON	54915	N9240 TOUCHDOWN DR
0.34	46292	VILLAGE OF HARRISON	JESSICA N STAMOS	ALEXANDER W STAMOS	N9239 LAURA ST	APPLETON	54915	N9239 LAURA ST
0.32	46282	VILLAGE OF HARRISON	JED RYAN	KRISTI RYAN	N9238 LAURA ST	APPLETON	54915	N9238 LAURA ST
0.32	46258	VILLAGE OF HARRISON	DERCKS DEWITT II LLC		3405 COMMERCE CT STE C	APPLETON	54911	N9237 CASSANDRA WAY
0.42	46230	VILLAGE OF HARRISON	BRUCE J JR BERLOWSKI	NICOLE L BERLOWSKI	N9244 CASSANDRA WAY	APPLETON	54915	N9244 CASSANDRA WAY
0.37	46326	VILLAGE OF HARRISON	UECKER PROPERTIES LLC		W4954 HIGHLAND RD	KAUKAUNA	54130	N9249 TOUCHDOWN DR
0.34	46312	VILLAGE OF HARRISON	JEREMY ROBERT BIEMERET	AMY RAE BIEMERET	N9248 TOUCHDOWN DR	APPLETON	54915	N9248 TOUCHDOWN DR
0.34	46294	VILLAGE OF HARRISON	MATTHEW D CLEVELAND		N9247 LAURA ST	APPLETON	54915	N9247 LAURA ST
0.32	46280	VILLAGE OF HARRISON	SCHMIDT BROS CUSTOM HOMES INC		4845 CANVASBACK	APPLETON	54913	N9246 LAURA ST
0.32	46260	VILLAGE OF HARRISON	UECKER PROPERTIES LLC		W4954 HIGHLINE DR	KAUKAUNA	54130	N9245 CASSANDRA WAY
0.43	46228	VILLAGE OF HARRISON	LIMITLESS HOLDING COMPANY LLC		N9250 CASSANDRA WAY	APPLETON	54915	N9250 CASSANDRA WAY
0.37	46328	VILLAGE OF HARRISON	TOM MCHUGH CONSTRUCTION LLC		PO BOX 54	GREENVILLE	54942	N9257 TOUCHDOWN DR
0.34	46310	VILLAGE OF HARRISON	DERCKS DEWITT II LLC		3405 COMMERCE CT STE C	APPLETON	54911	N9256 TOUCHDOWN DR
0.34	46296	VILLAGE OF HARRISON	BRIAN R NODOLF	CLAIRE L NODOLF	N9255 LAURA ST	APPLETON	54915	N9255 LAURA ST
0.36	46278	VILLAGE OF HARRISON	UECKER PROPERTIES LLC		W4954 HIGHLINE DR	KAUKAUNA	54130	N9254 LAURA ST
0.33	46262	VILLAGE OF HARRISON	SCHMIDT BROS CUSTOM HOMES INC		4845 CANVASBACK	APPLETON	54913	N9253 CASSANDRA WAY
0.38	46226	VILLAGE OF HARRISON	CAYLA WESSLEY	CHRISTOPHER WESSLEY	N9260 CASSANDRA WAY	APPLETON	54915	N9260 CASSANDRA WAY

0.33	46308	VILLAGE OF HARRISON	BENJAMIN M BURROUGHS	ALLYSON M STUCKEY	N9264 TOUCHDOWN DR		APPLETON	54915	N9264 TOUCHDOWN DR
0.33	46298	VILLAGE OF HARRISON	JEFFREY DOUGLASS	ROMINA DOUGLASS	609 CREEK VIEW LN		APPLETON	54915	N9263 LAURA ST
0.38	46276	VILLAGE OF HARRISON	DERCKS DEWITT II LLC		3405 COMMERCE CT STE C		APPLETON	54911	N9262 LAURA ST
0.35	46264	VILLAGE OF HARRISON	CYPRESS HOMES INC		1230 W COLLEGE AVENUE, SUITE D		APPLETON	54914	N9261 CASSANDRA WAY
0.37	46330	VILLAGE OF HARRISON	MIDWEST DESIGN HOMES INC		N2335 W FRONTAGE RD		KAUKAUNA	54130	N9265 TOUCHDOWN DR
0.33	46224	VILLAGE OF HARRISON	VIRTUE HOMES LLC		N1093 CHATHAM CT		GREENVILLE	54942	N9266 CASSANDRA WAY
5.74	46222	VILLAGE OF HARRISON	SCOTT DEWITT		3504 COMMERCE CT		APPLETON	54911	N9268 CASSANDRA WAY
0.31	46306	VILLAGE OF HARRISON	TOM MCHUGH CONSTRUCTION LLC		PO BOX 54		GREENVILLE	54942	N9272 TOUCHDOWN DR
0.32	46300	VILLAGE OF HARRISON	RONALD CARLSON	MARCIA CARLSON	N9271 LAURA STREET		APPLETON	54915	N9271 LAURA ST
0.38	46274	VILLAGE OF HARRISON	PFILE HOMES INC		W6977 FIRELANE 3		MENASHA	54952	N9270 LAURA ST
0.38	46266	VILLAGE OF HARRISON	CYPRESS HOMES INC		1230 W COLLEGE AVE, SUITE D		APPLETON	54914	N9269 CASSANDRA WAY
0.38	46332	VILLAGE OF HARRISON	DERCKS DEWITT II LLC		3405 COMMERCE CT STE C		APPLETON	54911	N9273 TOUCHDOWN DR
0.33	46220	VILLAGE OF HARRISON	MIDWEST DESIGN HOMES INC		N2335 W FRONTAGE RD		KAUKAUNA	54130	N9276 CASSANDRA WAY
0.45	46334	VILLAGE OF HARRISON	HOU YEE LENG HER	HOU YEE LENGHER, et al.	5530 SPRINGHOUSE DR UNIT 13		PLEASANTON	94588	W5599 TONY'S WAY
0.42	46304	VILLAGE OF HARRISON	CYPRESS HOMES INC		1230 W COLLEGE AVENUE, SUITE D		APPLETON	54914	W5585 TONY'S WAY
0.4	46272	VILLAGE OF HARRISON	CYPRESS HOMES INC		1230 W COLLEGE AVE, SUITE D		APPLETON	54914	W5547 TONY'S WAY
0.35	46270	VILLAGE OF HARRISON	LCF HOMES LLC		W5982 RYFORD ST		MENASHA	54952	W5541 TONY'S WAY
0.42	46268	VILLAGE OF HARRISON	VANS REALTY & CONSTRUCTION OF APPLETON INC		2525 S ONEIDA ST		APPLETON	54915	W5529 TONY'S WAY
0.51	46218	VILLAGE OF HARRISON	EVAN GIDLOF	APRIL GIDLOF	N9284 CASSANDRA WAY		APPLETON	54915	N9284 CASSANDRA WAY
1.29	46340	VILLAGE OF HARRISON	DERCKS DEWITT II LLC		3405 COMMERCE CT STE C		APPLETON	54911	SCHMIDT RD
0.39	46202	VILLAGE OF HARRISON	DERCKS DEWITT II LLC		3405 COMMERCE CT STE C		APPLETON	54911	W5596 TONY'S WAY
0.34	46286	VILLAGE OF HARRISON	MYLENA THAO	JOHN NELSON SCHOEPEL	N9222 LAURA ST		APPLETON	54915	N9222 LAURA ST
0.39	46204	VILLAGE OF HARRISON	DERCKS DEWITT II LLC		3405 COMMERCE CT STE C		APPLETON	54911	W5574 TONY'S WAY
0.31	46206	VILLAGE OF HARRISON	VANS REALTY & CONSTRUCTION OF APPLETON INC		2525 S ONEIDA ST		APPLETON	54915	W5564 TONY'S WAY
0.31	46208	VILLAGE OF HARRISON	VANS REALTY & CONSTRUCTION OF APPLETON INC		2525 S ONEIDA ST		APPLETON	54915	W5552 TONY'S WAY
0.33	46210	VILLAGE OF HARRISON	KEYSTONE HOMES AND REMODELING LLC		3479 E AQUAMARINE AVE		APPLETON	54913	W5546 TONY'S WAY
0.33	46212	VILLAGE OF HARRISON	DERCKS DEWITT II LLC		3405 COMMERCE CT STE C		APPLETON	54911	W5538 TONY'S WAY
0.41	46214	VILLAGE OF HARRISON	CORENE STROHFELDT	GREG STROHFELDT	W5604 SWEET CLOVER DR		APPLETON	54915	W5530 TONY'S WAY
0.36	46318	VILLAGE OF HARRISON	JASON P SCHUCKERT	JENNIFER L SCHUCKERT	N9224 TOUCHDOWN DR		APPLETON	54915	N9224 TOUCHDOWN DR
0.71	46216	VILLAGE OF HARRISON	DELILAS LUNIAK		W5522 TONY'S WAY		APPLETON	54915	W5522 TONY'S WAY
3.56	46336	VILLAGE OF HARRISON	DERCKS DEWITT II LLC		3405 COMMERCE CT STE C		APPLETON	54911	SCHMIDT RD
0.39	46302	VILLAGE OF HARRISON	CHANDLER SWANSEN		W5563 TONY'S WAY		APPLETON	54915	W5563 TONY'S WAY
3.18	46350	VILLAGE OF HARRISON	STEPHANUS MACRANDER	LEE A MACRANDER	W5517 FIRELANE 12		MENASHA	54952	FIRELANE 13
1.22	46348	VILLAGE OF HARRISON	DANIEL VERBETEN	LAVONNE VERBETEN	7961 LILY RIVER LANE		PICKEREL	54465	FIRELANE 12
1.22	46346	VILLAGE OF HARRISON	DANIEL VERBETEN	LAVONNE VERBETEN	7961 LILY RIVER LANE		PICKEREL	54465	FIRELANE 12
1.53	46372	VILLAGE OF HARRISON	DONALD & KRISTINE VANROY LIVING TRUST		W5840 MANITOWOC RD		APPLETON	54915	MANITOWOC RD
0.58	46406	VILLAGE OF HARRISON	UECKER PROPERTIES LLC		W4954 HIGHLINE RD		KAUKAUNA	54130	W5681 VANS RD
0.69	33226	VILLAGE OF HARRISON	KENNETH R & ELLEN K ROTHE REV TRUST		W5691 VANS RD		APPLETON	54915	W5691 VANS RD
0.73	46408	VILLAGE OF HARRISON	TROY WILKER	MARINA WILKER	W5671 VANS RD		APPLETON	54915	W5671 VANS RD
0.58	46722	VILLAGE OF HARRISON	DEWITT DEVELOPMENT LLC		3405 COMMERCE CT		APPLETON	54911	W5885 EDGEWOOD DR
0.33	46704	VILLAGE OF HARRISON	DEWITT DEVELOPMENT LLC		3405 COMMERCE CT		APPLETON	54911	N8862 DUBLIN PASS
0.33	46700	VILLAGE OF HARRISON	DEWITT DEVELOPMENT LLC		3405 COMMERCE CT		APPLETON	54911	N8880 DUBLIN PASS
0.33	46702	VILLAGE OF HARRISON	DEWITT DEVELOPMENT LLC		3405 COMMERCE CT		APPLETON	54911	N8870 DUBLIN PASS
0.31	46694	VILLAGE OF HARRISON	DEWITT DEVELOPMENT LLC		3405 COMMERCE CT		APPLETON	54911	N8881 DUBLIN PASS
0.31	46674	VILLAGE OF HARRISON	DEWITT DEVELOPMENT LLC		3405 COMMERCE CT		APPLETON	54911	W5884 EDGEWOOD DR
0.33	46718	VILLAGE OF HARRISON	BRYANNA BAUMANN		3884 MICKE CT		DE PERE	54115	W5863 EDGEWOOD DR
0.33	46716	VILLAGE OF HARRISON	SILVERTREE HOMES LLC		N8147 STOMMEL RD		SHERWOOD	54169	W5853 EDGEWOOD DR
0.34	46688	VILLAGE OF HARRISON	DEWITT DEVELOPMENT LLC		3405 COMMERCE CT		APPLETON	54911	W5828 EDGEWOOD DR
0.34	46690	VILLAGE OF HARRISON	DEWITT DEVELOPMENT LLC		3405 COMMERCE CT		APPLETON	54911	W5820 EDGEWOOD DR

0.34	46686	VILLAGE OF HARRISON	DEWITT DEVELOPMENT LLC		3405 COMMERCE CT	APPLETON	54911	W5836 EDGEWOOD DR
0.35	46714	VILLAGE OF HARRISON	DEWITT DEVELOPMENT LLC		3405 COMMERCE CT	APPLETON	54911	W5843 EDGEWOOD DR
0.35	46720	VILLAGE OF HARRISON	DEWITT DEVELOPMENT LLC		3405 COMMERCE CT	APPLETON	54911	W5873 EDGEWOOD DR
0.36	46684	VILLAGE OF HARRISON	VIRTUE HOMES LLC		N1093 CHATHAM CT	GREENVILLE	54942	W5844 EDGEWOOD DR
0.36	46692	VILLAGE OF HARRISON	DEWITT DEVELOPMENT LLC		3405 COMMERCE CT	APPLETON	54911	W5810 EDGEWOOD DR
0.36	46676	VILLAGE OF HARRISON	DEWITT DEVELOPMENT LLC		3405 COMMERCE CT	APPLETON	54911	W5876 EDGEWOOD DR
0.37	46680	VILLAGE OF HARRISON	UECKER PROPERTIES LLC		W4954 HIGHLINE RD	KAUKAUNA	54130	W5860 EDGEWOOD DR
0.37	46712	VILLAGE OF HARRISON	HENNESSEY HOMES INC		9365 CENTER RD	NEENAH	54956	W5833 EDGEWOOD DR
0.37	46708	VILLAGE OF HARRISON	SILVERTREE HOMES LLC		N8147 STOMMEL RD	SHERWOOD	54169	W5813 EDGEWOOD DR
0.37	46710	VILLAGE OF HARRISON	DEWITT DEVELOPMENT LLC		3405 COMMERCE CT	APPLETON	54911	W5823 EDGEWOOD DR
0.37	46682	VILLAGE OF HARRISON	DEWITT DEVELOPMENT LLC		3405 COMMERCE CT	APPLETON	54911	W5852 EDGEWOOD DR
0.38	46678	VILLAGE OF HARRISON	UECKER PROPERTIES LLC		W4954 HIGHLINE RD	KAUKAUNA	54130	W5868 EDGEWOOD DR
0.39	46706	VILLAGE OF HARRISON	DEWITT DEVELOPMENT LLC		3405 COMMERCE CT	APPLETON	54911	W5807 EDGEWOOD DR
0.66	46672	VILLAGE OF HARRISON	DEWITT DEVELOPMENT LLC		3405 COMMERCE CT	APPLETON	54911	W5896 EDGEWOOD DR
1.07	46670	VILLAGE OF HARRISON	DEWITT DEVELOPMENT LLC		3405 COMMERCE CT	APPLETON	54911	W5893 WOODLAND RD
0.39	46698	VILLAGE OF HARRISON	DEWITT DEVELOPMENT LLC		3405 COMMERCE CT	APPLETON	54911	N8892 DUBLIN PASS
0.36	46696	VILLAGE OF HARRISON	DEWITT DEVELOPMENT LLC		3405 COMMERCE CT	APPLETON	54911	N8891 DUBLIN PASS
0.83	46668	VILLAGE OF HARRISON	DEWITT DEVELOPMENT LLC		3405 COMMERCE CT	APPLETON	54911	W5871 WOODLAND RD
2.29	46726	VILLAGE OF HARRISON	DEWITT DEVELOPMENT LLC		3405 COMMERCE CT	APPLETON	54911	WOODLAND RD
0.52	46724	VILLAGE OF HARRISON	DEWITT DEVELOPMENT LLC		3405 COMMERCE CT	APPLETON	54911	W5895 EDGEWOOD DR
2.97	46730	VILLAGE OF HARRISON	DALE MARX	CYNTHIA S MARX	N8296 COUNTY M	MENASHA	54952	SCHMIDT RD
1.22	46732	VILLAGE OF HARRISON	ROY J IMMEL TRUST		N7980 HORIZON CT	SHERWOOD	54169	MIELKE RD
3.32	46752	VILLAGE OF HARRISON	ZACHARY D PROPSON	ANNA E PROPSON	404 BENTWOOD DR	BRILLION	54110	HWY 55
	42780	VILLAGE OF HARRISON	VICTORIAN VILLAGE CONDO ASSOC		W6164 VICTORIAN DR	APPLETON	54915	W6170 VICTORIAN DR
1.13	46784	VILLAGE OF HARRISON	NORTH SHORE RIDGE LLC		229 E. WASHINGTON ST	APPLETON	54911	
5.85	46810	VILLAGE OF HARRISON	NORTH SHORE RIDGE LLC		229 E. WASHINGTON ST	APPLETON	54911	
2.13	46816	VILLAGE OF HARRISON	NORTH SHORE RIDGE LLC		229 E. WASHINGTON ST	APPLETON	54911	
1	46774	VILLAGE OF HARRISON	NORTH SHORE RIDGE LLC		229 E. WASHINGTON ST	APPLETON	54911	
1.7	46780	VILLAGE OF HARRISON	BENJAMIN VANHANDEL	ELIZABETH VANHANDEL	2320 S HARMON ST	APPLETON	54915	
1.72	46782	VILLAGE OF HARRISON	NORTH SHORE RIDGE LLC		229 E. WASHINGTON ST	APPLETON	54911	
1.79	46778	VILLAGE OF HARRISON	NORTH SHORE RIDGE LLC		229 E. WASHINGTON ST	APPLETON	54911	
1.98	46776	VILLAGE OF HARRISON	NORTH SHORE RIDGE LLC		229 E. WASHINGTON ST	APPLETON	54911	
0.86	46786	VILLAGE OF HARRISON	NORTH SHORE RIDGE LLC		229 E. WASHINGTON ST	APPLETON	54911	
0.99	46788	VILLAGE OF HARRISON	MATTHEW R VERSTEGEN		519 RICHARD ST	COMBINED LOCKS	54113	
1.24	46812	VILLAGE OF HARRISON	NORTH SHORE RIDGE LLC		229 E. WASHINGTON ST	APPLETON	54911	
1.4	46814	VILLAGE OF HARRISON	NORTH SHORE RIDGE LLC		229 E. WASHINGTON ST	APPLETON	54911	
1.96	46808	VILLAGE OF HARRISON	NORTH SHORE RIDGE LLC		229 E. WASHINGTON ST	APPLETON	54911	
1.77	46794	VILLAGE OF HARRISON	NORTH SHORE RIDGE LLC		229 E. WASHINGTON ST	APPLETON	54911	
1.77	46796	VILLAGE OF HARRISON	TYLER J CLARINGBOLE	HEATHER M CLARINGBOLE	3120 E BLUE TOPAZ DR	APPLETON	54913	
1.64	46798	VILLAGE OF HARRISON	NORTH SHORE RIDGE LLC		229 E. WASHINGTON ST	APPLETON	54911	
3.12	46792	VILLAGE OF HARRISON	NORTH SHORE RIDGE LLC		229 E. WASHINGTON ST	APPLETON	54911	
1.34	46790	VILLAGE OF HARRISON	ERIC KESSENICH		4509 N KNOLLWOOD LN	APPLETON	54913	
1.48	46806	VILLAGE OF HARRISON	NORTH SHORE RIDGE LLC		229 E. WASHINGTON ST	APPLETON	54911	
1.34	46804	VILLAGE OF HARRISON	NORTH SHORE RIDGE LLC		229 E. WASHINGTON ST	APPLETON	54911	
1.14	46800	VILLAGE OF HARRISON	NORTH SHORE RIDGE LLC		229 E. WASHINGTON ST	APPLETON	54911	